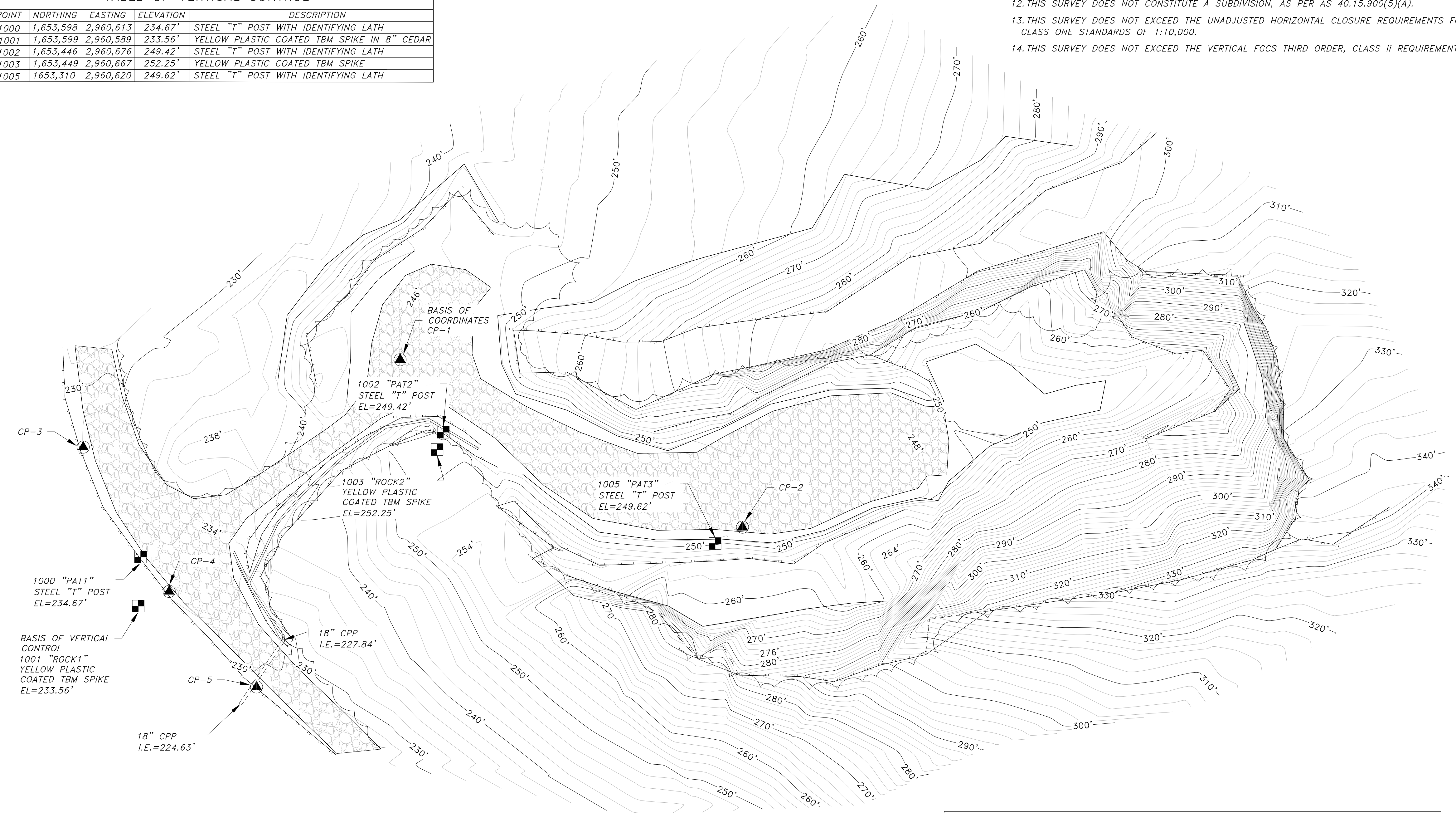


GENERAL NOTES

1. THE HORIZONTAL DATUM FOR THIS SURVEY IS NORTH AMERICAN DATUM 1983, ALASKA STATE COORDINATE SYSTEM ZONE1 (NAD83 AK SPC Z1)[5001].
2. THE VERTICAL DATUM FOR THIS SURVEY IS NORTH AMERICAN VERTICAL DATUM 1988 (NAVD88).
3. THE PROJECT CONTROL WAS PROCESSED THROUGH NGS OPUS AND TRIMBLE BUSINESS CENTER, VER. 3.7.1.
4. THIS SURVEY WAS PERFORMED WITH A TRIMBLE S7 ROBOTICS INSTRUMENT USING STANDARD LASER RANGING TECHNIQUES.
5. TRIMBLE GNSS R8-2 RECEIVERS WERE USED TO PERFORM GPS STATIC SESSIONS TO OBTAIN DATUM CORRECTIONS.
6. THIS SURVEY AND ALL COORDINATES, SHOWN HEREON, ARE IN NAD 83 AK SPC Z1 GRID COORDINATES.
7. DIFFERENTIAL LEVELING WAS PERFORMED THROUGH ALL BENCHMARKS, SHOWN HEREON. ALL ELEVATIONS WERE ADJUSTED TO THE BASIS OF VERTICAL CONTROL. THIS WORK WAS PERFORMED WITH A SOKKIA B2-1 DIFFERENTIAL LEVEL. THE COLLIMATION OF THIS INSTRUMENT WAS CHECKED PRIOR TO DIFFERENTIAL LEVELING.
8. THE PROJECT SCOPE REQUIRED "T" POSTS, WITH IDENTIFYING LATH, TO BE SET FOR THIS SURVEY. THESE WERE SET, BUT STABILITY IS QUESTIONABLE. ADDITIONAL PLASTIC COATED TBM SPIKES WERE SET IN MORE STABLE POSITIONS AND ARE SHOWN, HEREON.
9. ALL CONVENTIONAL TRAVERSES WERE ADJUSTED USING THE COMPASS-BOWDITCH METHOD.
10. THE FIELD WORK WAS PERFORMED FOR OCTOBER 25 - 28, 2016.
11. NO TIES TO THE PUBLIC LAND SURVEY SYSTEM WERE MADE DURING THE COURSE OF THIS SURVEY.
12. THIS SURVEY DOES NOT CONSTITUTE A SUBDIVISION, AS PER AS 40.15.900(5)(A).
13. THIS SURVEY DOES NOT EXCEED THE UNADJUSTED HORIZONTAL CLOSURE REQUIREMENTS FOR FGCS THIRD ORDER, CLASS ONE STANDARDS OF 1:10,000.
14. THIS SURVEY DOES NOT EXCEED THE VERTICAL FGCS THIRD ORDER, CLASS II REQUIREMENTS.

TABLE OF VERTICAL CONTROL

POINT	NORTHING	EASTING	ELEVATION	DESCRIPTION
1000	1,653,598	2,960,613	234.67'	STEEL "T" POST WITH IDENTIFYING LATH
1001	1,653,599	2,960,589	233.56'	YELLOW PLASTIC COATED TBM SPIKE IN 8" CEDAR
1002	1,653,446	2,960,676	249.42'	STEEL "T" POST WITH IDENTIFYING LATH
1003	1,653,449	2,960,667	252.25'	YELLOW PLASTIC COATED TBM SPIKE
1005	1,653,310	2,960,620	249.62'	STEEL "T" POST WITH IDENTIFYING LATH



LEGEND

- HORIZONTAL CONTROL POINT (ESTABLISHED)
- TEMPORARY BENCH MARK (ESTABLISHED)
- TOP OF BANK
- TOE OF SLOPE
- 18" CORRUGATED PLASTIC PIPE CULVERT
- 95' MAJOR CONTOUR LINE
- MINOR CONTOUR LINE
- TREE LINE
- GRAVEL SURFACE

SURVEYOR'S CERTIFICATE

I HEREBY CERTIFY THAT I AM PROPERLY REGISTERED AND LICENSED TO PRACTICE LAND SURVEYING IN THE STATE OF ALASKA, AND THAT THIS AS-BUILT SURVEY REPRESENTS A SURVEY MADE BY ME OR UNDER MY DIRECT SUPERVISION, AND THE MONUMENTS SHOWN THEREON ACTUALLY EXIST AS DESCRIBED, AND THAT ALL DIMENSIONS AND OTHER DETAILS ARE CORRECT.

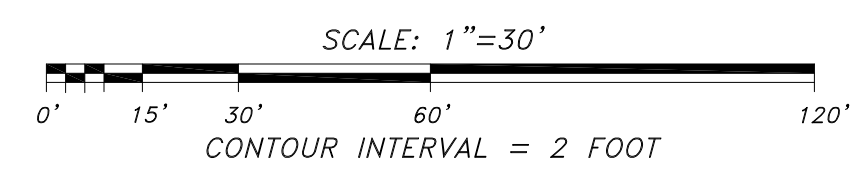
DATE: 11/17/16



A TOPOGRAPHIC SURVEY PLAN OF
ADEC CONTAMINATED SOIL REPOSITORY
WITHIN THE CITY & BOROUGH OF WRANGELL, ALASKA SITKA RECORDING DISTRICT

TABLE OF HORIZONTAL CONTROL

CP	NORTHING	EASTING	LATITUDE	LONGITUDE	ELEVATION	DESCRIPTION
1	1,653,467.90	2,960,712.17	N56°21'13.77"	W132°18'42.32"	246.20'	8" SPIKE
2	1,653,296.37	2,960,628.28	N56°21'12.09"	W132°18'43.87"	247.77'	8" SPIKE
3	1,653,626.60	2,960,668.38	N56°21'15.34"	W132°18'43.04"	232.28	14" SPIKE
4	1,653,583.57	2,960,596.09	N56°21'14.93"	W132°18'44.34"	232.66'	8" SPIKE
5	1,653,539.78	2,960,548.29	N56°21'14.51"	W132°18'45.20"	229.71'	5/8" X 30" REBAR



P:\2016\16416JN-AHTNA_Topog\Shm\16416JN-WRANGELL MONDRIILL TOPOGRAPHIC SURVEY.r2.dwg PLOT: November 17, 2016 dt: 9:17am

CLIENT: AHTNA ENGINEERING SERVICES, LLC
110 WEST 38th AVENUE, SUITE 200A
ANCHORAGE, AK 99503

SURVEYOR: R&M ENGINEERING/PDC, INC. ENGINEERS
6205 GLACIER HIGHWAY
JUNEAU, ALASKA 99801

DATE: November 17, 2016 R&M/PDC PROJ. No. 16416JN
PROJECT ORDER NO. P002001972

SCALE: 1"=30' SHEET 1 OF 1

R&M R & M ENGINEERING
ENGINEERS GEOLOGISTS SURVEYORS