

Map & Photo Legend



Dutch Harbor Processors looking northwest.

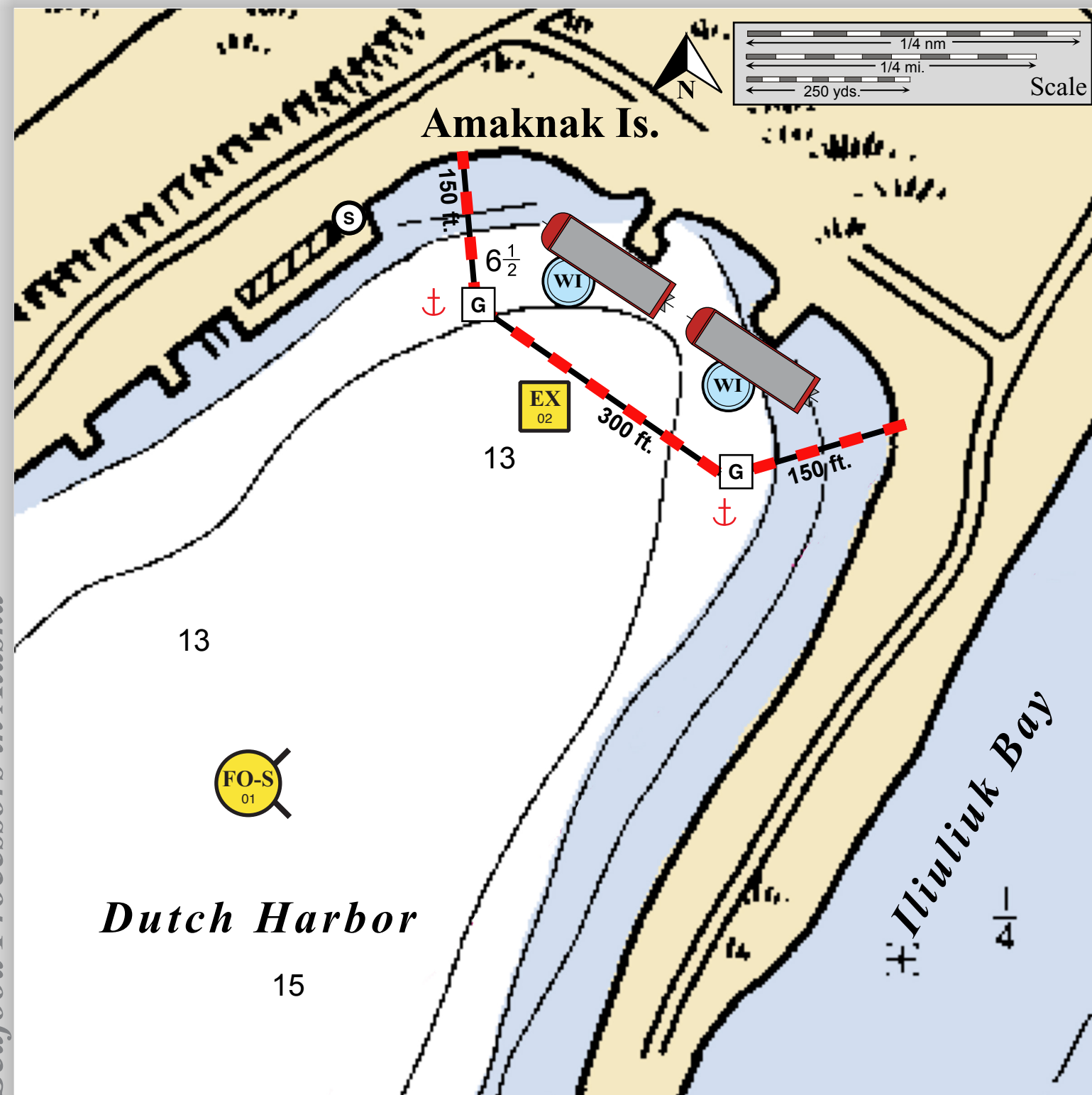
	Free-oil Containment and Recovery, Shallow Water		Calm-water Boom
	Exclusion Booming		Gate
	Sea-water Intake		Processor Vessel
			Large Anchor System



Dutch Harbor looking southwest towards Unalaska.

Dutch Harbor Processors, AK PPP-01



Center of map at 53° 54.60' N Lat., 166° 30.61' W Lon.



Processor Protection Plans for Seafood Processors in Alaska

This is not intended for navigational use.

Soundings in fathoms

ID	Location and Description	Response Strategy	Implementation	Response Resources	Staging Area	Site Access	Resources Protected (months)	Special Considerations
AK PPP01-01 	Dutch Harbor Nearshore waters in the general area of: Lat. 53°54.01'N Lon. 166°31.37'W	Free-oil Recovery Maximize free-oil recovery in the offshore & nearshore environment of Icycle Seafoods Processing Complex depending on spill location and trajectory.	Deploy free-oil recovery strike teams upwind and up current of the Icycle Seafoods Processing Complex. Use aerial surveillance to locate incoming slicks.	Deploy multiple free-oil recovery strike teams as required to maximize interception of oil before it impacts Icycle Seafoods Processing Complex.	Vessel Platform	Via marine waters Chart 16529-1	Icycle Seafood Processing Barge and Vessels	Vessel master should have local knowledge. Use extreme caution, shoal waters and extensive commercial vessel traffic.
AK PPP01-02 	Icycle Seafoods Processing Complex- Dutch Harbor Shoreside Anchor Points a. Lat. 53°54.76' N Lon. 166°30.48'W b. Lat. 53°54.71' N Lon. 166°30.35'W	Exclusion Exclude oil from impacting the seasonally docked seafood processing barges and vessels that operate in Dutch Harbor. Coordinate with the facility managers to ensure the seawater intakes are within the excluded area.	Deploy anchors and boom with skiffs at high tide. Place 600 ft. of calm-water boom in an apex or modified apex in front of the processing barges that seasonally tie up in Dutch Harbor. Use 2 large anchor systems for the apexes. Anchor the boom to shore using available structures or anchor stakes. Establish two gates in the boom to allow vessel access to the plants. Operating the gate will require a fishing vessel with sufficient power to manage the boom in a variety of conditions. Tend throughout the tide.	Deployment Equipment 600 ft. calm-water boom 2 ea. large anchor systems 3 ea. small anchor systems 4 ea. anchor stakes 2 ea. gate systems Vessels 1 ea. class 3 1 ea. class 6 Personnel/Shift 5 ea. vessel crew/general tech Tending Vessels 1 ea. class 3 1 ea. class 6 Personnel/Shift 3 ea. vessel crew/general tech	Vessel platform	Via marine waters Chart 16529-1	Icycle Seafood Processing Barge and Vessels	Vessel master should have local knowledge. Tested: not yet