

CIAP WEAR Trip Report
Clark's Point (population 59)
July 12, 2012



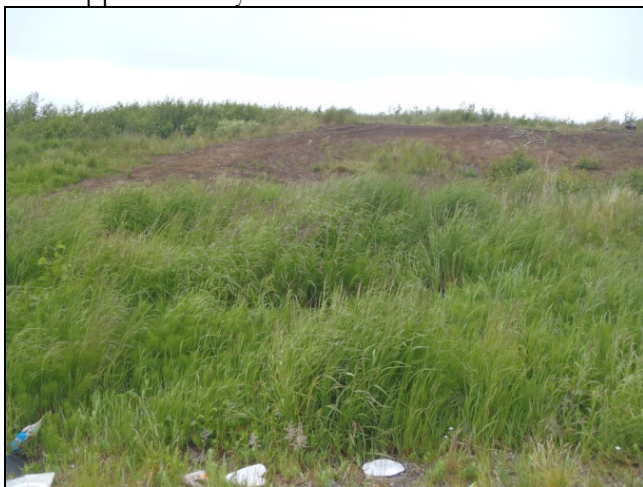
Alaska Department of Environmental Conservation (ADEC) Solid Waste Program (Kitrina Persson and Jamie Gorman) conducted a Coastal Impact Assistance Program (CIAP), Waste Erosion Assessment and Review (WEAR) site visit for the Village of Clark's Point, July 12th, 2012. Sharon Clark, the Village Council Administrator, and Tom Egbert, the City Manager helped coordinate our visit. The following narrative is a brief description of our findings during the July inspection.

WEAR Sites:

- **Landfill, 58.831868/-158.555465 (Active)** – This unpermitted landfill is located on a bluff above town overlooking the Nushagak Bay. It includes a separate unsorted salvage area, an old water tank used as an incinerator, a fenced area for waste disposal, and a shipping crate used for battery collection. The fence is standing but in poor condition and there is no gate to limit access or posted signs to direct users. The current waste cell was full of unburned garbage and waste had been placed in various other areas around the landfill site. A large mound of excavated soil was available next to the trench for cover. The landfill is approximately 200 feet from the edge of the bluff. The 2009 Alaska Baseline Erosion Assessment study by the Army Corps of Engineers specifies an erosion rate for Clark's Point of 2 to 4 feet per year.



- **Old Landfill, 58.831900/-158.556158 (Closed)** – This landfill site is located across the road directly west from the current landfill. The landfill has been closed with the proper cover and vegetation is re-growing rapidly. The site extends towards the edge of the bluff, which is approximately 130 feet west.



- **Cannery Remains, 58.844086/-158.552245 (Abandoned)** – The old cannery buildings and other equipment from the cannery (established in 1888) remain as they were left in 1952. There is a rusted box with bricks and tar eroding on the beach, a fuel tank, and thousands of pounds of leftover materials around the old buildings. The buildings are less than 5 feet from the high tide line. The cannery has been closed and off-limits to the public for several years due to asbestos concerns.



- **Old Cannery Landfill, 58.844371/-158.549600 (Abandoned)** – This landfill from the 1980's and earlier is actively eroding into the ocean. The site mainly contains old rusted scrap metal and is located on the tip of the point, 150 feet east of the cannery. Much of the point has eroded in the past 30 years (approximately 50 feet) and a sea wall has been installed to the west of the site, in front of the cannery.



- **Tank Farm, 58.841523/-158.553983 (Active)** – The tank farm is about 450 feet from the beach. There are four horizontal fuel tanks on a concrete pad and there is no visible secondary containment.



- **Transformers, 58.838652/-158.557512 (Abandoned)** – There are several transformers throughout the community buried in high grass. At one location visited, the blackened transformers were sitting atop dead vegetation and were 200 feet from the beach.

