



# Haines, AK

## Local Response Conex



The response conex is located at the AML Dock on Taiya Road.

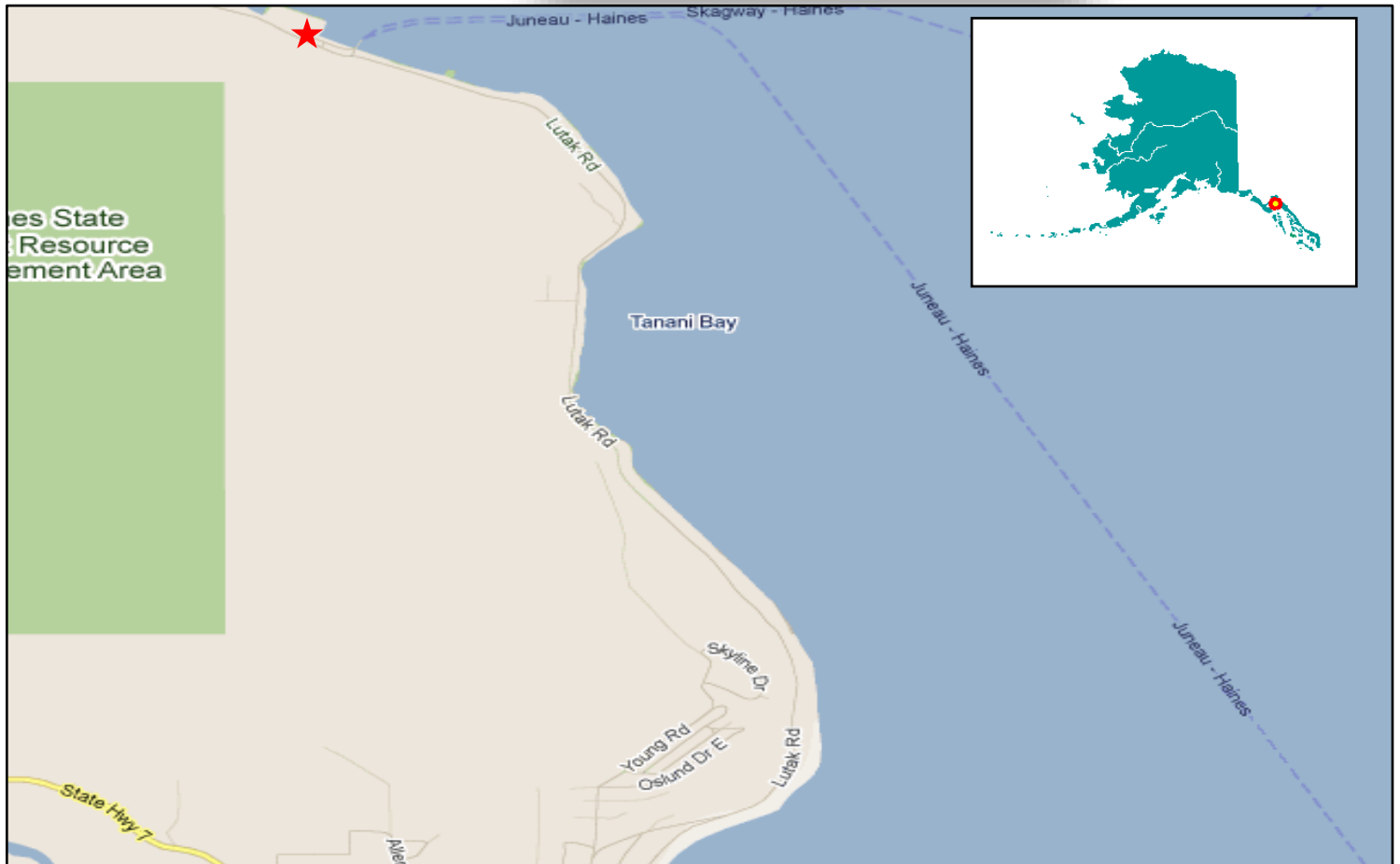
### Contacts for access to this conex:

Phil Benner (Harbormaster)	(907) 766-2448
Responders (ADEC) After Hours call	(907) 465-5340 (800) 478-9300



### LOCATION MAP

Lat/Long: 59° 16.9356' N; 135° 28.0416' W



## HAINES RESPONSE CONEX

QTY	UNIT	DESCRIPTION	USED DATE	QTY
<b>SECURITY/LIGHTING</b>				
1	ea	American padlock, long neck, h.d., w/ 2 keys marked "LRC"		
<b>CONTAINMENT</b>				
1000	ft	ADEC Kepner Sea Curtain 8" x 12" X 100 feet (NOTE: 10 Sections)		
2	ea	Tow bridles (for above boom), w/2 s.s. snap hooks		
2	ea	Boom connector adapters, universal (hinge, pin, & plate) to ASTM, w/1 galv. snap hook		
12	ea	Danforth anchors, 22 lbs., w/10' - 3/8" galv. chain, snap hook		
13	ea	Galv. chain 10' - 3/8" (spare), connectors & galv. snap hook		
2	ea	Tow lines, 5/8" X 100', w/ s.s. thimble & 2/ s.s. snap hooks each		
28	ea	Anchor Ropes, 1/2" X 100' w/ s.s. Thimbles & 1 snap hook each		
11	ea	A-1 12" crab buoys, w/ 3/8" X 10' nylon line & 1 s.s. snap hook		
1	spl	3/8" 3 strand braided nylon line, 600' spool		
4	sect	6-inch Swiftwater boom		
<b>RECOVERY</b>				
1	ea	Sorbent pad hand wringer		
26	bdl	Sorbent pads (bundles), 18" X 18"		
20	bdl	Sorbent boom (bundles), 5" X 10'		
15	bdl	Sorbent sweeps (bundles), 18" X 20'		
6	ea	Boxes oil snare on a rope - 50' Length (pom-poms on a rope)		
<b>STORAGE</b>				
4	ea	Overpack drums, (steel), 85 gal. removable top, MDL 1A2 DOT		
2	box	Overpack drum liners, 4 mil., 50 bags/box		
1	ea	Lift bags, 35" X 35" X 35", w/ 2 galv. snap hooks		
4	ea	Lift bags poly liners, 4 mil. (72" X 132")		
<b>Hip Roof Tuff-E Tool Box with (15"L X 7"W X 6.5"H):</b>				
1	ea	Craftsman socket wrench bar, flex head, 1/2" DR., #44201		
1	ea	Craftsman ratchet socket wrench, 1/2 " Drive, #44809		
1	ea	Craftsman, 15/16" - 12 point deep socket, 1/2" Drive, #47529		
1	ea	Craftsman adjustable pliers, #45381		
1	ea	Craftsman 10" adjustable crescent wrench, #44604		
1	ea	16 oz. ball peen hammer, wood handle, #2452-2013		
1	ea	8 lb. sledge hammer with 36" handle		
		misc. spare bolts and pins in tool box for kepner boom		
<b>CONEX CARGO STORAGE</b>				
5	ea	Cargo strap, ratchet assembly, (2" wide X 12' long)		
4	ea	Cargo strap, ratchet assembly, (2" wide X 16' long)		

# HAINES RESPONSE CONEX

If any of the items in the conex were used, please mark "X" in the USED column and indicate the quantity used.  
In addition, please fill out the portion below and send the modified form to the following address or fax:

ADEC/SPAR/PERP  
Attention: Robert Blea  
555 Cordova Street, 2nd Flr  
Anchorage, AK 99501 or Fax: 907-269-7687

---

Conex Accessed By: (please print neatly)

---

Association (Business, Agency, etc.)

**ADEC Contact Information:**

---

Signature and Date

ADEC Juneau Office (907) 465-5340  
ADEC After Hours (800) 478-9300