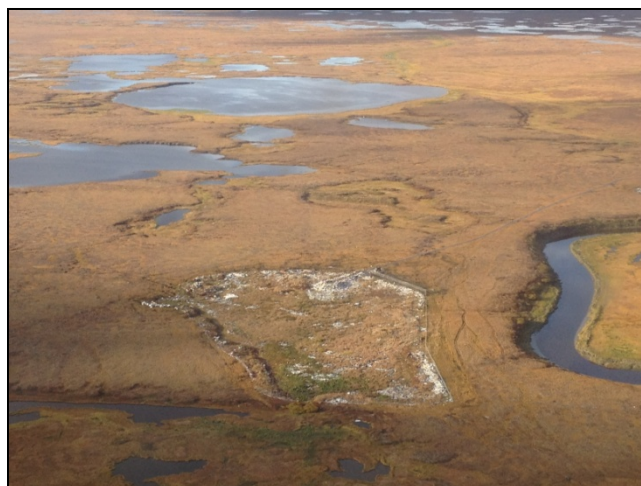




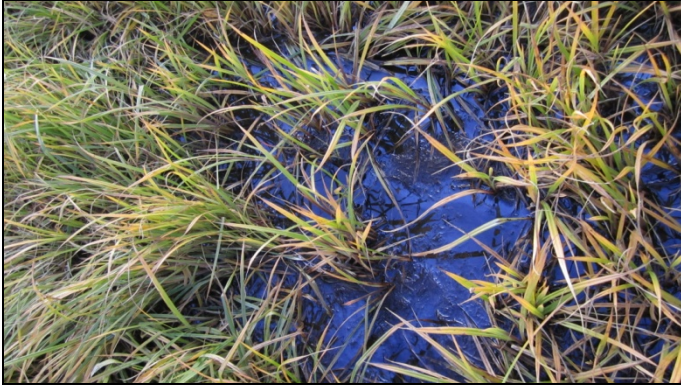
Alaska Department of Environmental Conservation (ADEC) Solid Waste Program and Contaminated Sites Program (Doug Huntman and Grant Lidren) conducted a Coastal Impact Assistance Program (CIAP), Waste Erosion Assessment and Review (WEAR) site visit for Kwigillingok on September 20<sup>th</sup>, 2012. Moses Alexie and Mike White with the EPA Tribal IGAP Program participated on the site visits. The following narrative is a brief description of our findings during the September inspection.

### WEAR Sites

- **Landfill, 59.870809/-163.122683 (Active)** – The landfill is a self-haul landfill located roughly half a mile away from the village adjacent to a Kwigillingok River Slough. The site is only accessible by boat in the summer and snow machine in the winter. The site is approximately 5 acres with waste spread throughout the site. Waste is manually pulled back and covered with a thin layer of local silty material every year. The entrance to the site erodes approximately two feet annually. The nearby slough is tidally influenced and is susceptible to storm surges. During the storms of October 2012, the landfill flooded to depths of two feet, washing away much of the waste as far as a mile inland of the landfill.



- **Kwik Inc. Former Tank Farm, 59.863169/-163.135520 (Active)** – This former tank farm is an active Contaminated Site (File ID 2425.38.004). The tanks have been moved to the consolidated tank farm, but fueling pump, piping, header, and horizontal drums still remain. The silty, wet ground is known to have fuel contamination. Wetland type grass has grown up in the area. The tank farm site is located approximately 85 feet from the Kwigillingok River bank which is eroding at a rate of four feet per year per the US Army Corps of Engineers 2009 study Alaska Baseline Erosion Assessment (BEA). Sloughing of the bank has been observed. The onsite building has collapsed into a pile of rubble approximately 10 feet from the Kwigillingok River.



- **Kwik Inc. Consolidated Tank Farm, 59.881941/-163.151836 (Active)** – There are nine horizontal and four vertical fuel tanks in a secondary containment area. Some of the tanks are from the Kwik Inc. Former Tank Farm. There were no observed signs of a recent fuel spill. The tanks are about 345 feet from the banks of the Kwigillingok River. These banks are eroding at a rate of two feet per year per the BEA study. The tank farm is on silty, wet soil.



- **Former BIA School, 59.863459/-163.137806 (Active)** – The former BIA school is a Brownfield site under the Contaminated Sites Program (File ID 2425.57.001). It consists of several old buildings and a former tank farm. The buildings, which are owned by the Lower Kuskokwim School District, are scheduled to be demolished later in 2013 and will likely be taken to the Kwigillingok Landfill. There are four empty vertical fuel tanks on the property with evidence of previous leaks in the form of stressed soil and a visible sheen. The tanks are located approximately 350 feet from the Kwigillingok River whereas the closest school structure is about 150 feet from the bank. There is a reported erosion rate of four feet per year for the closest stretch of riverbank per the BEA study. However there was observed over two feet of bank erosion over the span of two months due to the October 2012 storms which caused widespread flooding in the area.

