

CIAP WEAR Trip Report
Noatak (population 568)
July 26, 2012 & September 20, 2013 & July 11, 2014



Alaska Department of Environmental Conservation (ADEC) Solid Waste Program (Trisha Bower and Rebecca Colvin) conducted a Coastal Impact Assistance Program (CIAP), Waste Erosion Assessment and Review (WEAR) site visit for the Village of Noatak, July 26th, 2012. This community was revisited on September 20, 2013 by Trisha Bower and Sandra Woods and on July 11, 2014 by Sandra Woods and Sarah Durand. The following report has been revised to reflect the changes noted during the 2014 site visit.

WEAR Sites

- **AVEC Tank Farm, 67.570675/-162.966236 (Active)** – The AVEC tank farm is centrally located in Noatak and is the largest tank farm. It has been in place since the 1970s and contains 12 vertical diesel tanks with a total capacity of 95,254 gallons. The tanks are within a lined secondary containment area with no fencing to block public access. Concrete blocks have been installed for erosion control as the Noatak River is approximately 85 feet away.

2012 Photos



2014 Photos



- **Runway Tanks, 67.567027/-162.972244 (Active)** — This tank farm is located at the end of the airport runway. It consists of two horizontal gasoline tanks, which are owned by the Native Store. Fuel is delivered by plane to these holding tanks until transported from the runway to the native store. Other tanks on site include two approximately 500 gallon tanks and one approximately 10,000 gallon tank with contents unknown. Some of the tanks were raised on wood pallets/blocks and were on top of plastic sheeting for spill containment. This site is located approximately 500 feet from the Noatak River.

2012 Photos



2013 Photos



2014 Photos

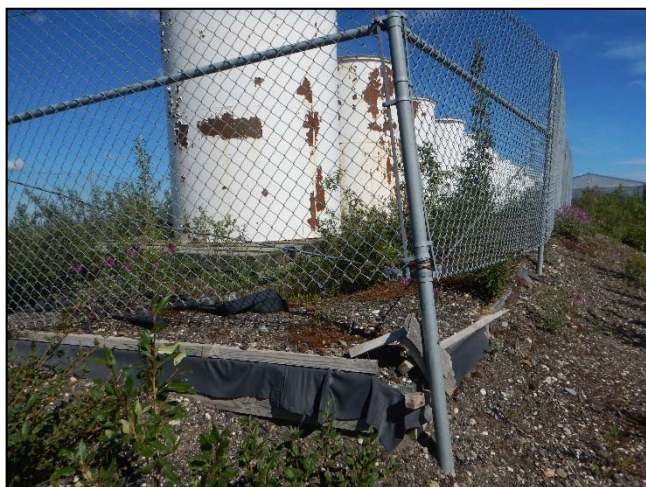
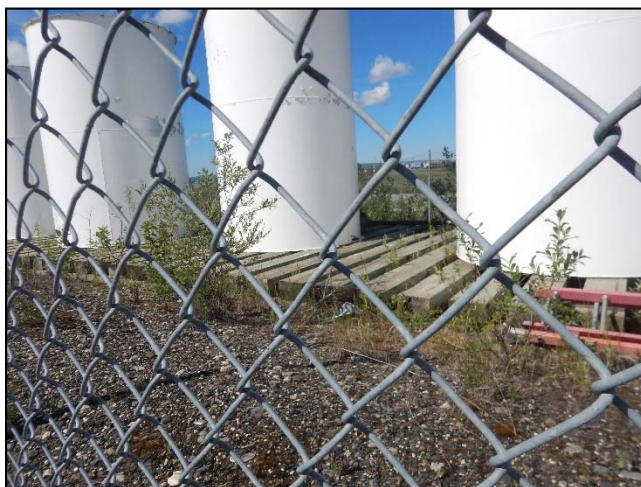


- **School Tank Farm, 67.56817/-162.970429 (Active)** – This school tank farm contains 15 vertical above ground storage tanks less than 600 feet from the runway apron due air fuel deliveries. These tanks have been in this location since around the 1990s. The tanks are on large wooden supports within a bermed, fenced area with secondary containment; however due to ground movement the containment is damaged on one corner. Local residents reported that multiple small spills have occurred at this location, but have not been managed. It is owned and operated by the Northwest Arctic Borough School District and is 350 feet from Noatak River.

2012 Photos



2014 Photos



- **Closed Landfill, 67.56019/-162.972479 (Closed)** – This closed landfill was operated from the 1970s – 1995. It is actively eroding into the Noatak River. When it began to erode into the river in 1999, the community sought grant funding in order to relocate it. The majority of this landfill was excavated and hauled to the new landfill in 2010. This site was the recipient of an extensive Brownfield Assessment as part of the Contaminated Sites Program in 2011 (File ID 440.38.002). This site was revisited in 2013 and active erosion is continuing, but no waste was observed to be eroding into the river. However the road to the landfill is experiencing yearly erosion. In 2014 this site had debris from the landfill exposed in the riverbank. It was reported by local residents that this site had lost approximately 10 feet to erosion in the last year. A cleanup effort in shallow parts of the river is planned for in late 2014 by local residents.

2012 Photos



2013 Photos



2014 Photos



- **Landfill, 67.566083/-162.992597 (Active)** – This unpermitted landfill is a fenced area fill that has operated since 1995. It is a 3.4 acre site that has accepted municipal waste, honeybucket waste, special waste, and construction and demolition waste. There is no waste separation and the burn unit is in disrepair and not used. Waste is brought to the site by residents as there is no collection program. It is located inland approximately 2,800 feet from the Noatak River. It is located approximately 1,830 feet from the school, which was constructed around 2 years after the landfill was built.



- **City Shop, 67.56499/-162.98609 (Active)** – The site is between the city shop and the sewage lagoon on the road to the landfill. It is used as a general dumping area for some salvageable materials, tanks, and liquid waste. It has two large horizontal tanks approximately 10,000 to 30,000 gallons each, two approximately 5,000 gallon horizontal tanks, and two approximately 20,000 gallon vertical tanks. This site is also used to stage used oil for burning in a used oil burner. Ten 5-gallon buckets and nine 55-gallon drums of used oil are present on site. There is soil staining around many of the drums and buckets. It is located 1,670 feet from Noatak River.



- **Water Plant Tank, 67.571324/-162.967712 (Active)** – This tank is located 265 feet Northeast of the AVEC tank farm. It is a double-walled 10,000 gallon diesel tank actively being used at the water treatment plant. It is operated by the City of Noatak and has been in place since at least the 1990s. The tank is located 250 feet from the Noatak River.



- **IRA Tanks, 67.570611/-162.968067 (Active)** – This site consists of two vertical fuel tanks in the middle of Noatak that are directly west of the AVEC Tank Farm. The tanks belong to the IRA and although they are empty at this time they are actively used from time to time for fuel storage and have planned future use. The tanks are on wooden platforms atop metal pilings several feet above ground level. They are located 370 feet from Noatak River.

2012 Photo



2014 Photo

