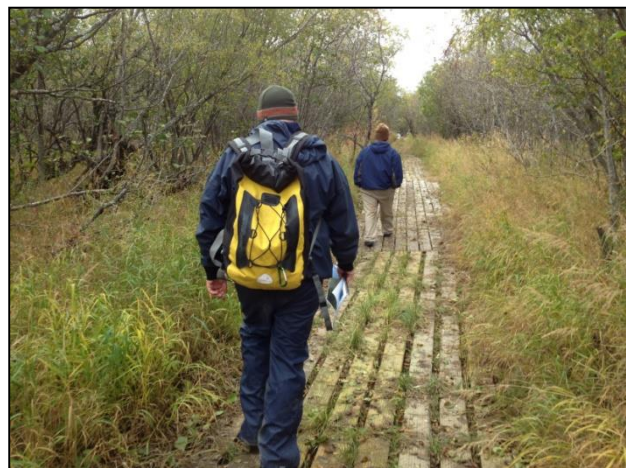
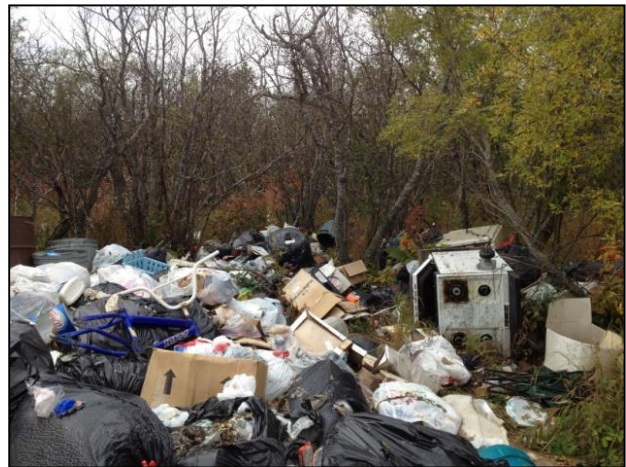




Alaska Department of Environmental Conservation (ADEC) Solid Waste Program and Contaminated Sites Program (Doug Huntman and Grant Lidren) conducted a Coastal Impact Assistance Program (CIAP), Waste Erosion Assessment and Review (WEAR) site visit for Oscarville on September 17th, 2012. Michael Stevens, Tribal Administrator participated on the site visit. The following narrative is a brief description of our findings during the September inspection.

WEAR Sites

- **Substitute Landfill, 60.722303/-161.77567 (Active)** – This landfill is not managed and is part of two sites connected by a trail. It was established by users not wanting to take waste down the boardwalk to the Landfill. It is roughly 0.05 acres in size and is approximately 500 feet from the village. The site is situated on discontinuous permafrost. The landfill is a self-haul landfill with no operator or dedicated equipment for the landfill. This landfill has been in operations since the early 2000's and has waste spread throughout the site. It is prone to flooding and as a consequence had a large area of waste mixed in water at the time of the inspection. Uncovered waste flows out of the site during spring and fall storms and is deposited in the tundra and nearby wetlands. The site is approximately 935 feet from the banks of the Kuskokwim River.



- **Landfill, 60.721137/-161.776381 (Active)** – This landfill appears to be the primary disposal site. It is located 400 feet directly behind the Substitute Landfill and is 0.3 acres in size. The primary concerns at the site include: no fencing, open dumping and no wastes prohibited from the site. There were large areas of ponding observed in the site. This site is located 598 feet from the Kuskokwim River.



- **School Tank Farm, 60.722953/-161.772458 (Active)** – This school tank farm is owned and operated by the Lower Kuskokwim School District. There are five vertical fuel tanks for heating oil (diesel) on site within a wooden fenced area. The tanks have been active since the mid 1980's. The site is located 145 feet from Oscarville Slough that connects to the Kuskokwim River. The banks along the slough were observed to be eroding at an unknown rate. The bank consists of silty material.



- **Native Corp. Tank Farm, 60.722814/-161.769627 (Active)** – This tank farm is operated by the Oscarville Native Corporation and contains one horizontal and one vertical fuel tank. The tanks contain gasoline and diesel. The site is located less than 40 feet from Oscarville Slough that connects with the Kuskokwim River. The banks along the slough were observed to be eroding. The bank consisted of silty material.

