



The vessel used during sampling. DEC photo.

AKMAP 2002 SOUTH CENTRAL SURVEY PHOTOS



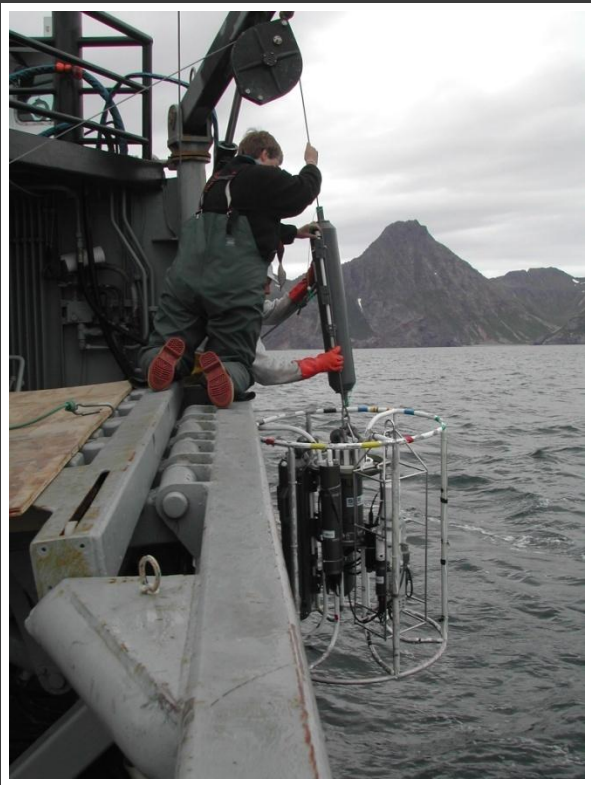
Photos courtesy of Alaska Department of Environmental Conservation



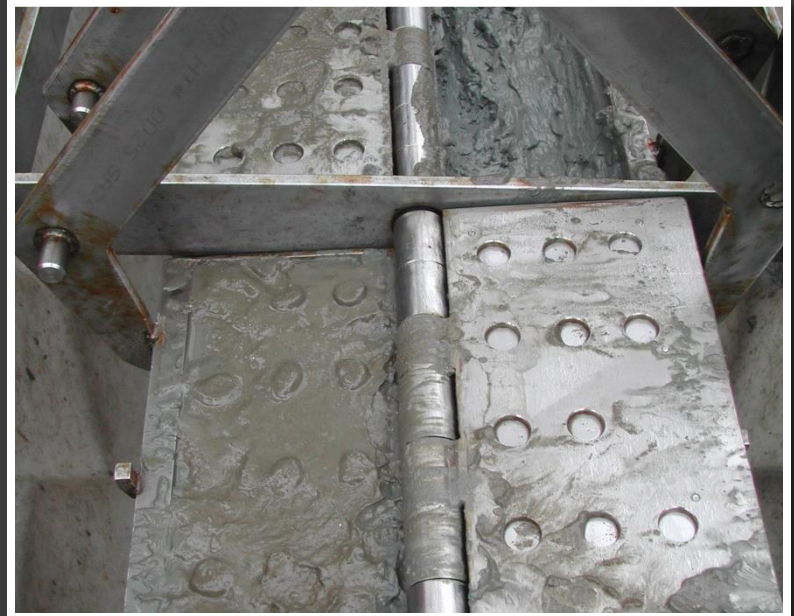
Field Crew collects and sorts trawl samples. DEC photos.



Various specimens collected through trawling. Cook Inlet Regional Citizen's Advisory Council partnered with DEC to complete this survey. DEC photos.



The field crew deploys the CTD and Niskin Rosette assembly. DEC photos.



The field crew collects sediment samples with Van Veen sampler. DEC photos.



OCEAN

ST. PAUL IS., AK

CAPE

15

NETS

NETS

4000