

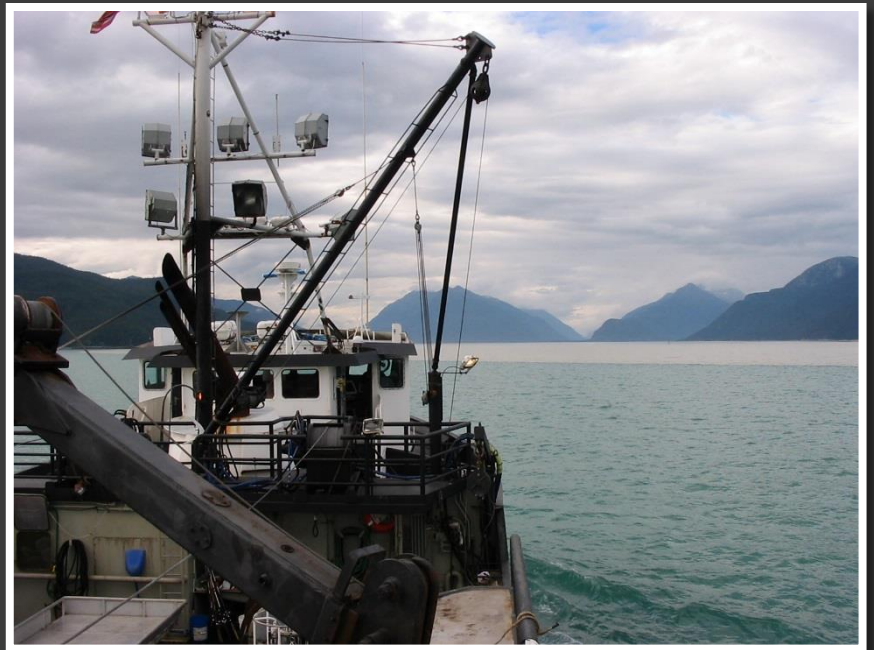


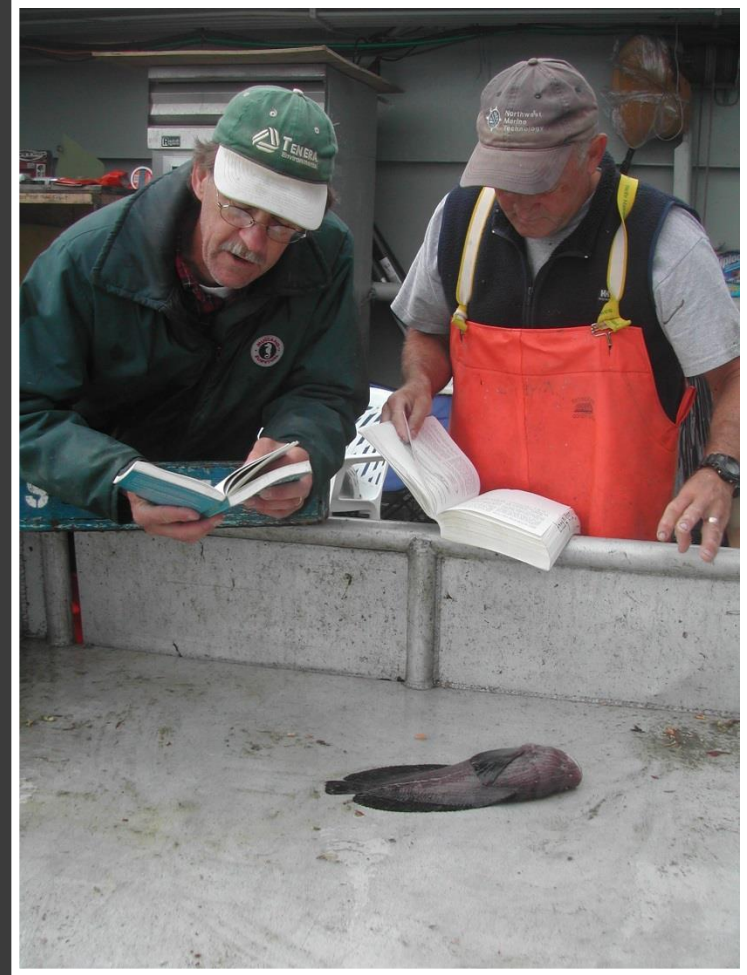
EMAP 2004 SOUTHEAST SURVEY PHOTOS



Photos courtesy of the Alaska Department of Environmental Conservation

In 2004, DEC's Alaska Monitoring and Assessment Program (AKMAP) partnered with Cook Inlet Regional Citizens Advisory Committee to survey aquatic resources along the Southeast Alaska coastline.

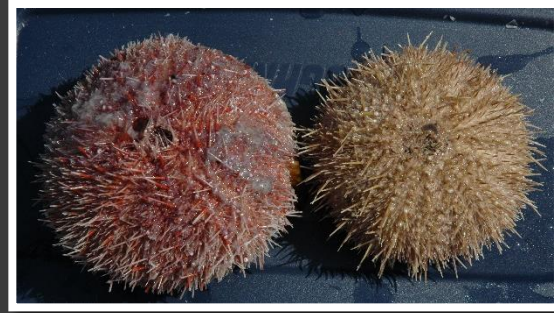




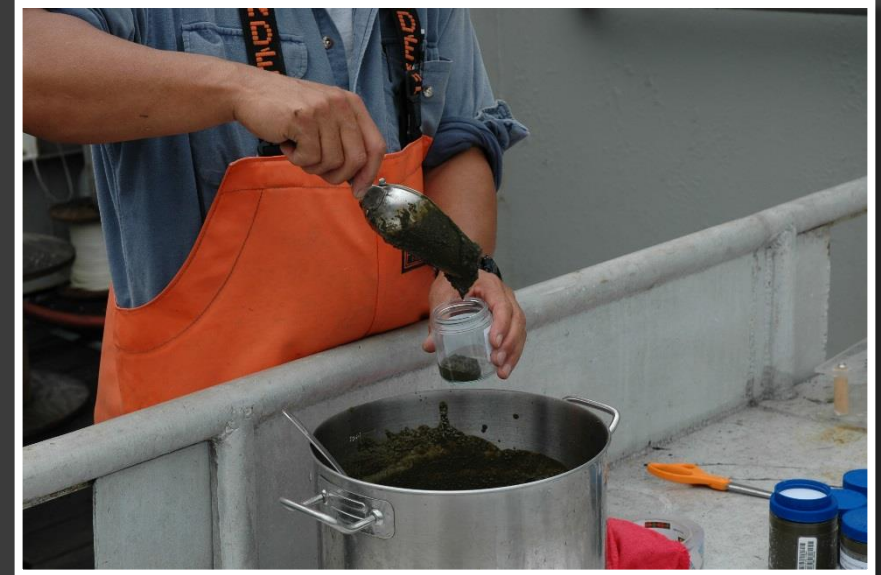
Crew members collected samples and data from 42 sites stretching from Dixon Entrance north to Icy Bay.



Field crew collects and sorts trawl samples.



Specimens collected through trawling.



Crew members collect water and sediment samples using CTD and Van Veen samplers



Field crew members from the Alaska Department of Environmental Conservation, Cook Inlet Regional Citizens Advisory Council, Environmental Protection Agency and National Oceanic and Atmospheric Administration completed this survey.



This project was primarily funded by the U.S. Environmental Protection Agency, Office of Research and Development. The views and conclusions contained in this document are those of the authors and should not be interpreted as representing the opinions or policies of the U.S. Government. Mention of trade names or commercial products does not constitute their endorsement by the U.S. Government.