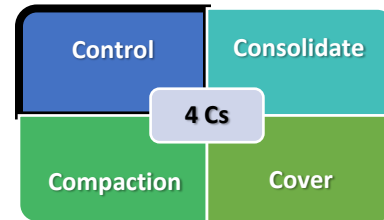


7.2 Collection Program

A collection program is the process of picking up solid waste or recycling from households, collection bins, or transfer stations. Using a collection service keeps people away from the landfill, assists in managing solid waste properly at the landfill and reduces health risks.



Why operate a solid waste collection program?

To prevent people from being vectors.

To prevent prohibited actions at the landfill.

To reduce traffic to the landfill.

Having a collection program helps prevent people from becoming vectors and reduces traffic to the landfill. If everyone in the community has to go to the landfill to dispose of their trash, they risk transporting germs and contaminants back into the community. A collection program will limit the number of people who may transport contaminants back to the community by limiting the number of people who need to go to the landfill.

In addition to preventing people from becoming vectors, a collection program helps prevent unwanted activities that are often associated with landfills that have no access control, such as shooting, open burning, dumping of prohibited materials, etc.

Types of solid waste collection programs:

Residential household collection

- Hauler collects trash from households on a customized pickup schedule.
- Hauler may have different routes for different days.
- Local employees/private contractors serve as hauler.

Neighborhood drop-off points/mini-transfer stations

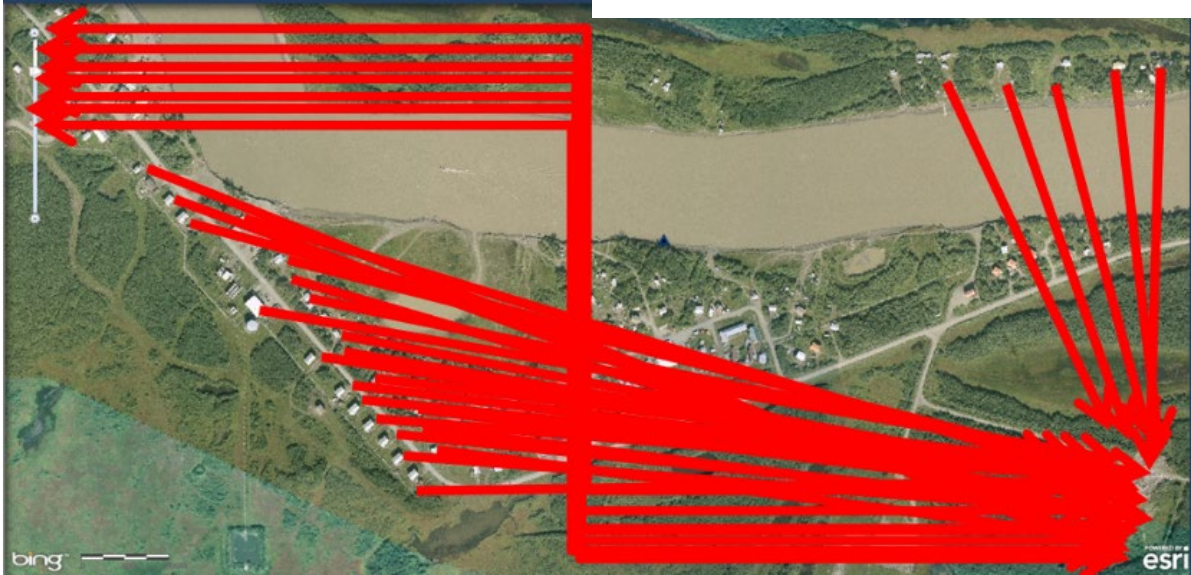
- Containers are set out at one or more locations in the community and then hauled to the landfill when full.



SOLID WASTE MANAGEMENT IN RURAL ALASKA

- Containers should be enclosed.
- Signs should be posted at the collection sites listing prohibited wastes.

Neighborhood collection container.



Landfill trips in a self-haul community.



Landfill trips in a community with a collection program.

SOLID WASTE MANAGEMENT IN RURAL ALASKA

Examples of collection bins/carts/trailers:



What to consider when deciding which collection program to use:

- Collection vehicle maintenance.
- How often should waste be collected? Waste will need to be collected often enough to avoid overfilling of the bins.
- Can wildlife get into the trash? If wildlife getting into trash is a problem, then the collection bin or method must be able to keep the wildlife out.
- How to keep the waste dry? Trash receptacles should have a lid that is easy for the disposer to open and close so that the receptacle doesn't fill with water from rain and snow melt.
- What kind of trash bin to use? There are two options for trash receptacles: homemade or commercially purchased. Homemade bins have the advantage of being less expensive and built to suit specific needs. Commercial trash receptacles have the benefit of being pre-assembled and potentially more heavy duty. Make sure the trash receptacles selected are easy to empty and work best with the available funding options.

Waste collection program helpful tips:

- Pick the type of collection program that will best fit the needs and capabilities of the community and landfill.
- Before implementing a collection program, make sure the landfill operator is included in the planning. If the landfill does not have an operator, find a landfill operator first.
- Include a fee with the collection program. If the program is operated at no cost for a few years before starting to collect fees, it can be very difficult to get people to pay for something that was previously free.
- Make sure the waste collection program meets the seasonal needs of the community. If more people are present in the community in the summer months, then collection frequency may need to be increased during the summer.

Types of recycling collection programs:

Drop-off

- The drop-off receptacles or structure for recyclables can be located at the landfill, in a designated office, or an area in town.
- A structure is more expensive than receptacles, but it can create a permanent drop-off location. The structure should be covered and secured with a door so that everything inside remains dry.
- Separate containers should be used for different materials, so they do not contaminate each other.
- Placement of receptacles is just as important as how many are provided. Containers should be placed where people can easily use them.

Pick-up

- In a pick-up collection program, recyclables are collected directly from homes and businesses. When someone needs their recyclables picked up, that person calls a specific department or individual to schedule the pickup.
- In some communities a large percentage of the population is comprised of elders. In these areas, a pick-up collection program may be the best option.

Recycling collection program helpful tip:

Recycling programs are often more successful when residents do not have to go out of their way to drop things off. Most residents will actively participate if the recycling point is centrally located in the community.

SOLID WASTE MANAGEMENT IN RURAL ALASKA

Examples:



Residential waste collection program.



Residential waste collection program.



Neighborhood waste collection container.