



Department of Environmental Conservation's Air Monitoring Program Community-Based Air Monitoring Project

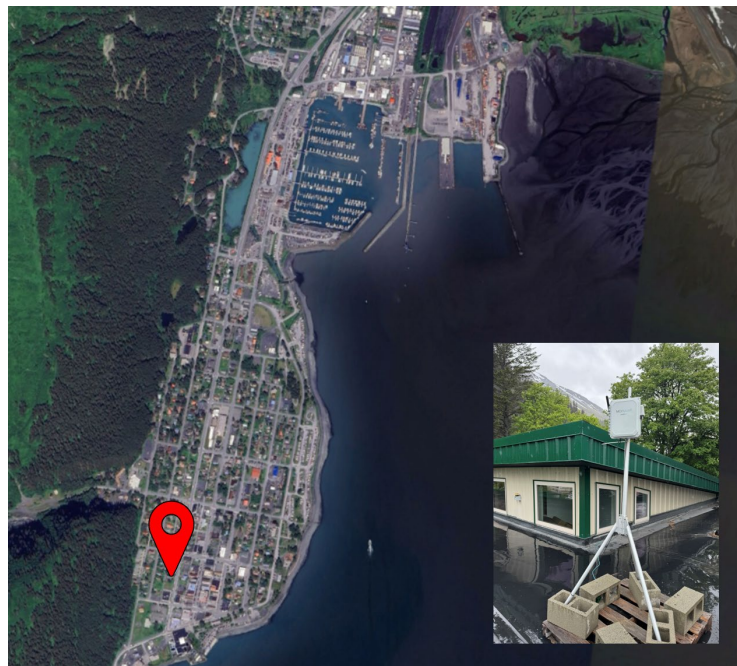
2024-25 Winter Season Air Quality Report for Qutekcak Native Tribe, Seward, Alaska

The QuantAQ MODULAIR™ sensor in Seward (221 3rd Ave, Seward, AK 99664) was installed on 06/05/2024.

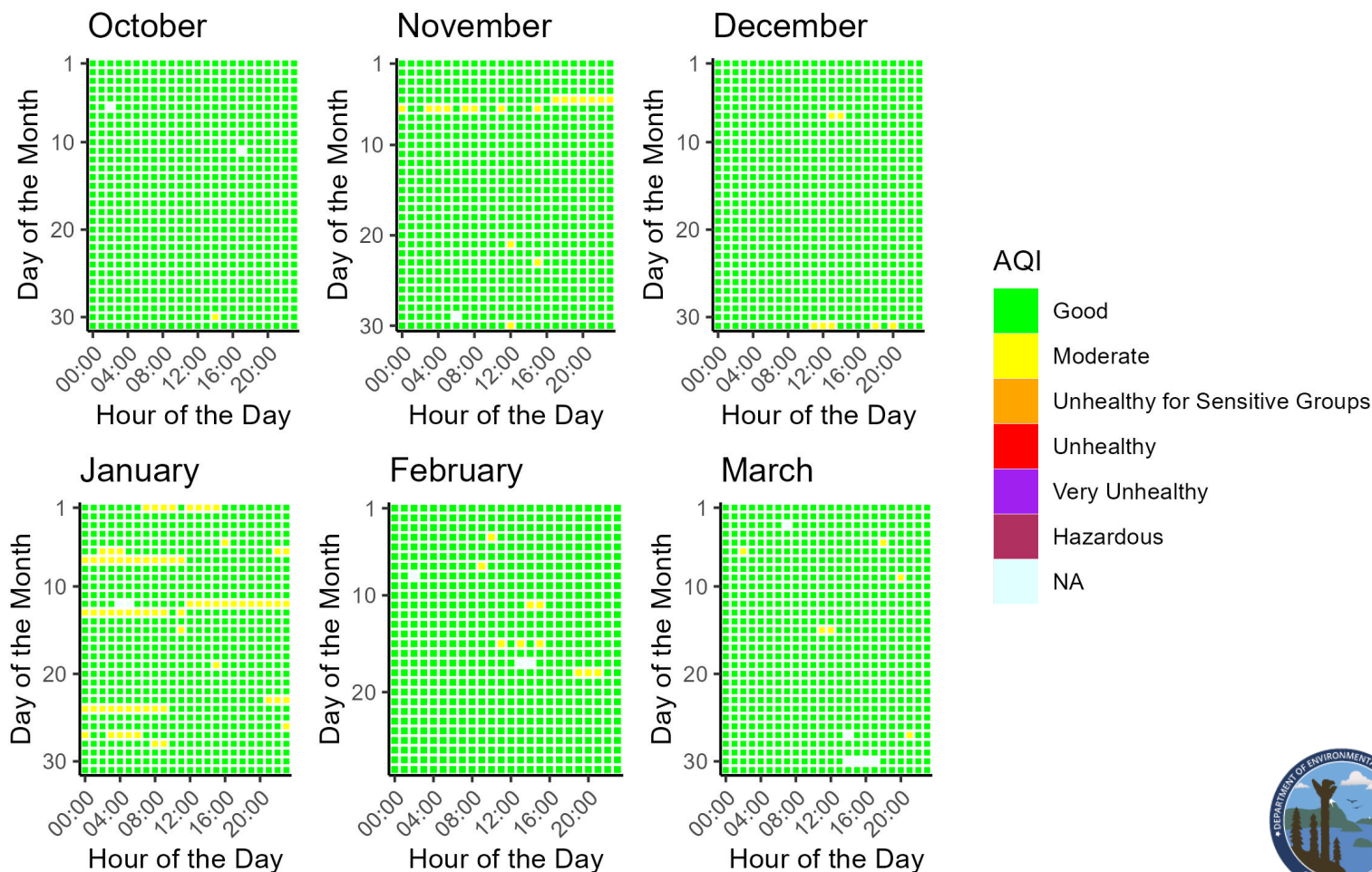
The sensor measures for carbon monoxide (CO), ozone (O₃), nitrogen oxide (NO), nitrogen dioxide (NO₂), particulate matter (PM_{2.5} and PM₁₀), temperature (°C), and relative humidity (RH). Data is collected every minute and is then processed into hourly averages.

The sensor in Seward has run well since its installation in June of 2024; there have been no physical issues with the sensor.

This data report covers the date range of October 1, 2024, to March 31, 2025.

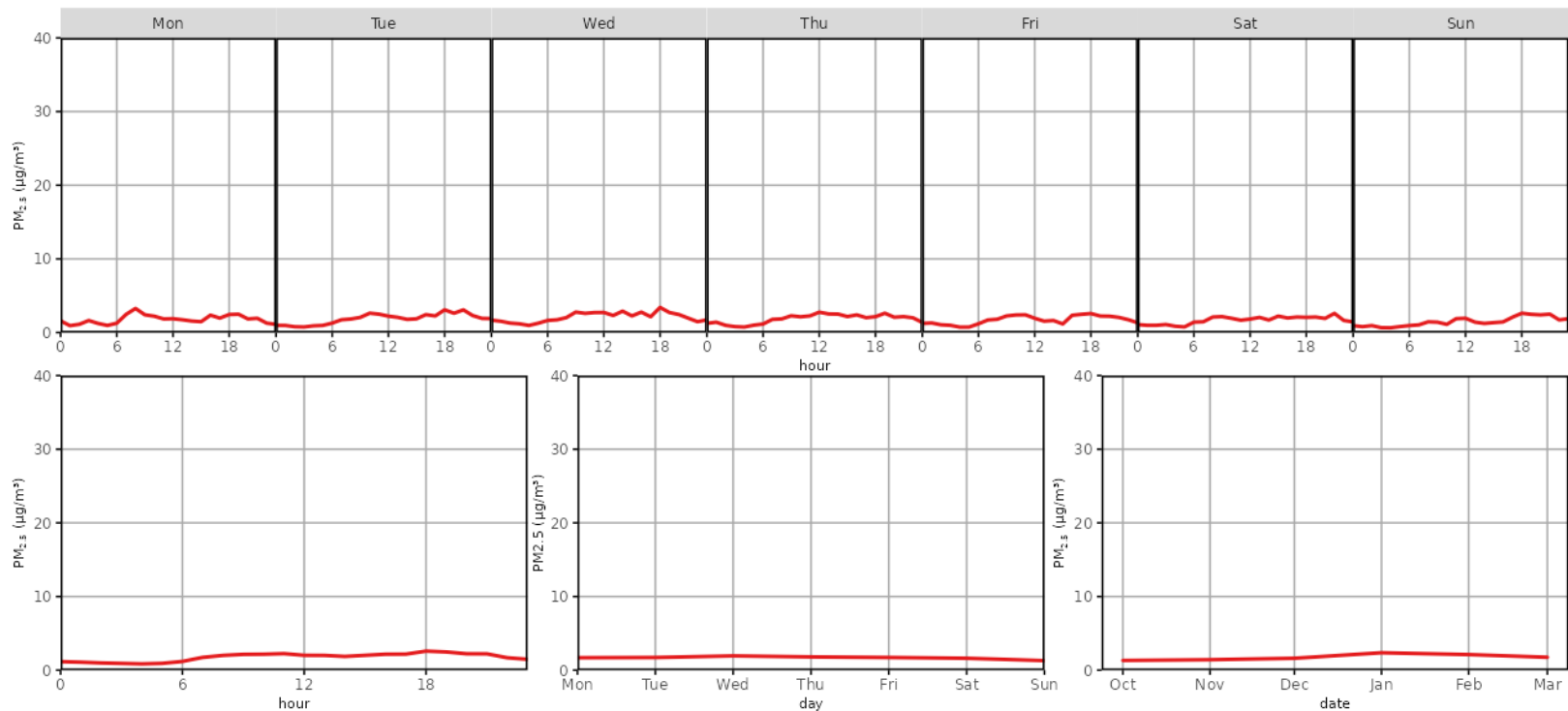


Daily PM_{2.5} Air Quality Index (AQI) for October 1, 2024 - March 31, 2025



2024-25 Winter Season Air Quality Report for QutekcaK Native Tribe

Median PM_{2.5} Concentrations for October 1, 2024 - March 31, 2025



Descriptive Statistics of Air Pollutants*

Parameter	1-hr PM _{2.5} (µg/m³)	24-hr PM _{2.5} (µg/m³)	1-hr PM ₁₀ (µg/m³)**	24-hr PM ₁₀ (µg/m³)**	1-hr O ₃ (ppb)	1-hr NO ₂ (ppb)	1-hr NO (ppb)	1-hr CO (ppb)
Min	0.01	0.39	0.00	1.46	0.00	5.00	0.00	0.23
Mean	2.44	2.40	15.77	15.40	29.12	20.30	2.70	0.28
1 st Max	29.57	12.24	348.00	108.21	48.20	33.55	35.41	0.64
2 nd Max	28.53	9.29	309.00	74.79	48.20	32.83	20.07	0.57

Data Discussion

Seward's PM_{2.5} ambient air quality for the winter 2024-25 season fell mostly in the “good” range of the Air Quality Index (AQI; more information about AQI is provided on page 3), with several days in January reporting “moderate” AQI levels. Daily patterns show slightly increased PM_{2.5} concentrations in the late afternoon/early evenings. Diurnal patterns show little variability of PM_{2.5} concentrations across different days of the week. From October to March, January showed the highest concentrations of PM_{2.5}.

* These statistics are based on preliminary data readings and are intended to provide a brief overview of sensor activity. Finalized data may be obtained upon request and through our annual statistical reports. Data from the community sensor network is non-regulatory and not comparable to the EPA's National Ambient Air Quality Standards (NAAQS; more information about the EPA NAAQS is provided on page 3).

** PM₁₀ particle sensors are influenced by weather events such as fog and snow due to hygroscopic effects, creating false maximum values that do not pose health risks.



Resources



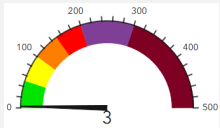
[Alaska Department of Environmental Conservation](#)



[EPA NAAQS Information](#)



[Air Quality Index \(AQI\) Basics](#)



[Real-Time AQI Data](#)



Data Access

To access historical data for your community's sensor, please email a request to: AMQA-Data-Request@alaska.gov . Data will be provided in Excel or .csv format.

Questions or Comments?

Please contact us!

Isaac Van Flein (Fairbanks): 907-451-2253 / isaac.vanflein@alaska.gov

Ayla Crosby (Anchorage): 907-269-7750 / ayla.crosby@alaska.gov

