

Map & Photo Legend



Iliuliuk Harbor - East Entrance looking northwest.

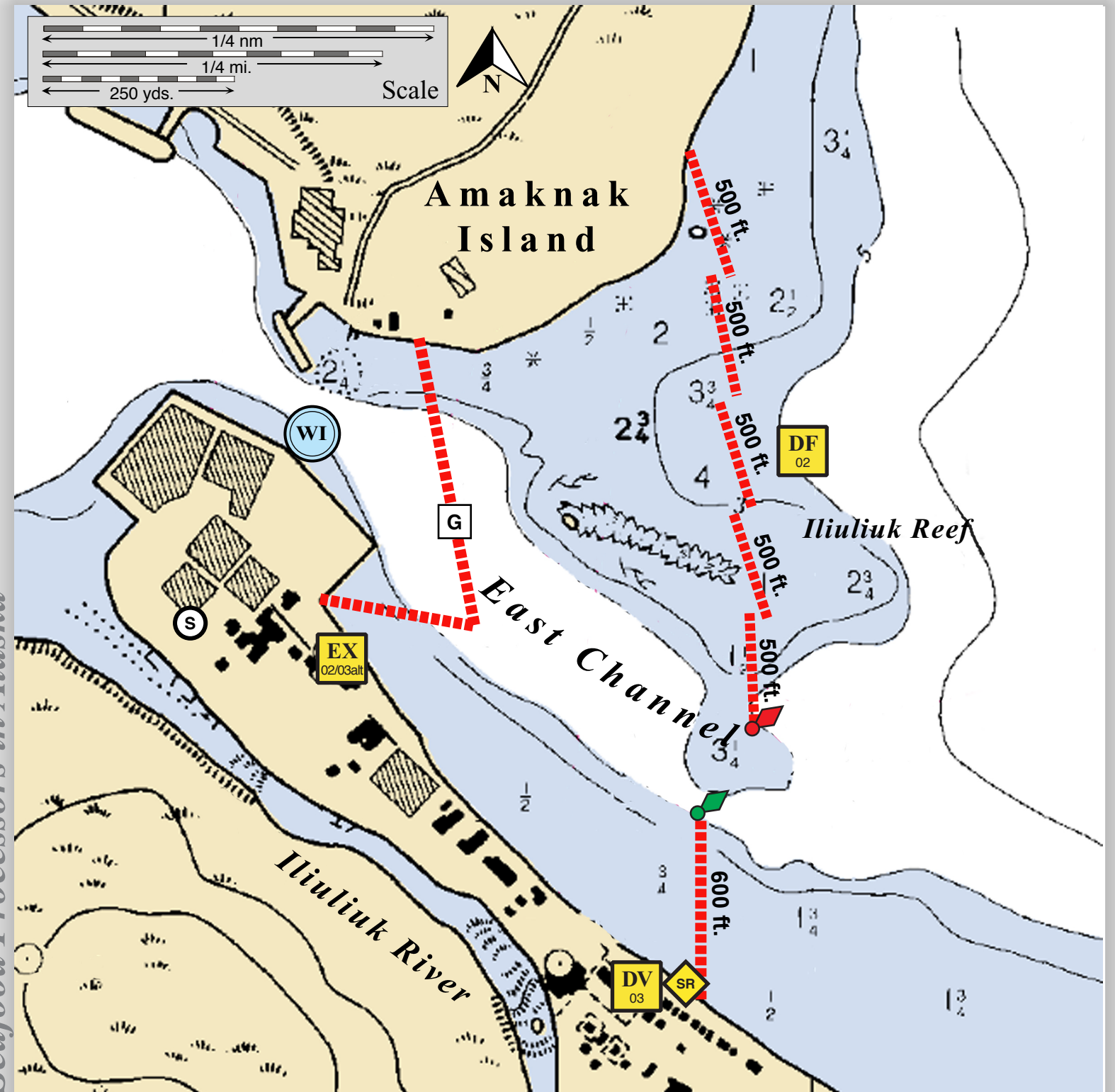
DF	Deflection Booming	WI	Sea-water Intake
DV	Diversion Booming	---	Protected-water Boom
EX	Exclusion Booming	S	Staging Area
SR	Shoreside Recovery	G	Gate



Iliuliuk Harbor looking northwest.

Iliuliuk Harbor - East Entrance, AK PPP-02





Center of map at 53° 52.74' N Lat., 166° 32.80' W Lon.



Processor Protection Plans for Seafood Processors in Alaska

This is not intended for navigational use.

Soundings in fathoms

ID	Location and Description	Response Strategy	Implementation	Response Resources	Staging Area	Site Access	Resources Protected (months)	Special Considerations
AK-PPP02-01 	Iliuliuk Harbor Nearshore waters in the general area of: Lat. 53°52.74'N Lon. 166°32.80'W	Free-oil Recovery Maximize free-oil recovery in the offshore & nearshore environment of Iliuliuk Harbor depending on spill location and trajectory.	Deploy free-oil recovery strike teams upwind and up current of the Iliuliuk Harbor. Use aerial surveillance to locate incoming slicks.	Deploy multiple free-oil recovery strike teams as required to maximize interception of oil before it impacts the fish processing facility in Iliuliuk Harbor.	Vessel Platform	Via marine waters Chart 16529-1	Same as AK-PPP02-02	Vessel master should have local knowledge. Use extreme caution, shoal waters and extensive commercial vessel traffic.
AK-PPP02-02 	North end of boom array Lat. 53°52.90'N Lon. 166°32.06'W South end of boom array Lat. 53°52.62'N Lon. 166°32.01'W	Deflection Deflect oil away from the east channel of Iliuliuk Harbor.	Deploy anchors and boom with skiffs and fishing vessels. Cascade 5 x 500 ft. sections of protected-water boom at proper angle to divert incoming oil away from the East Channel. Tend throughout the tide.	Deployment Equipment 2,500 ft. protected-water boom 20 ea. small anchor systems 2 ea. anchor stakes Vessels 1 ea. class 3 2 ea. class 6 Personnel/Shift 7 ea. vessel crew Tending Vessels 1 ea. class 3 1 ea. class 6 Personnel/Shift 3 ea. vessel crew	Small Boat Harbor or Alyeska Seafoods dock	Via marine waters Chart 16529-1	Fish- intertidal spawning- salmon (May-Sept.) Birds-waterfowl concentration, eagle nesting Marine mammals- seals, Human use- Unisea Seafoods Processing Facility, Alyeska Seafoods Processing Facility, Small Boat Harbor	Vessel masters should have local knowledge. Take appropriate measures as outlined in STAR Manual to protect the beach at the collection site. Ensure that the opening between the arrays is sufficient for vessels to pass while not allowing oil to migrate into the harbor. Tested: not yet
AK-PPP02-03 	North end of boom array Lat. 53° 52.62'N Lon. 166° 32.09'W South end of boom array/shoreside recovery location Lat. 53° 52.52'N Lon. 166° 32.07'W	Divert and Collect Divert oil to shore-side collection points determined by spill source and trajectory.	South of the channel, near the green buoy, place a 600 ft. section of protected-water boom at proper angle to divert incoming oil to the shoreside recovery unit. Set-up collection site. Tend through the tide.	Same as AK-PPP02 plus 600 ft protected-water boom 5 ea. Small anchor systems 2 ea. anchor stakes 1ea. shore-side collection units 2 ea. response techs	Small Boat Harbor or Alyeska Seafoods dock	Via marine waters Chart 16529-1	Same as AK-PPP02-02	Ensure that the opening between the arrays is sufficient for vessels to pass while not allowing oil to migrate into the harbor. Tested: not yet
AK PPP02-02&03 - Alternative 	Iliuliuk Harbor East Channel Entrance Shoreside Anchor Points a. Lat. 53°52.79'N Lon. 166°32.27'W b. Lat. 53°52.68'N Lon. 166°32.33'W Deploy alternative if strategies 02&03 are not feasible or not providing sufficient exclusion.	Exclusion Exclude oil from impacting Iliuliuk Harbor and the seafood processing plants. Coordinate with the harbormaster to ensure vessel access.	Deploy anchors and boom with skiffs and fishing vessels at high tide. Place 1500 ft. of protected-water boom in an apex formation in the East Channel. Use a large anchor system for the apex. Anchor the boom to shore using available structures or anchor stakes. Establish a gate in the boom to allow vessel access to the plants. Operating the gate will require a fishing vessel with sufficient power to manage the boom in a variety of conditions. Tend throughout the tide.	Same as AK-PPP02 plus 1500 ft. calm-water boom 1 ea. large anchor systems 6 ea. small anchor systems 4 ea. anchor stakes 1 ea. gate systems	Small Boat Harbor or Alyeska Seafoods dock	Via marine waters Chart 16529-1	Same as AK-PPP02-02	Vessel master should have local knowledge. Tested: not yet