



# Flood Mitigation Strategies for class I and II MSW

1

Remove any materials staged for backhaul from the barge landing

2

Secure loose items that will float if they are stored in the flood plain

3

Secure and label all liquids, chemicals, containers, and drums

4

Secure and relocate and lead-acid batteries

5

Lock and secure any container that may contain recycling

6

Cover all disposed waste at the landfill with cover material

7

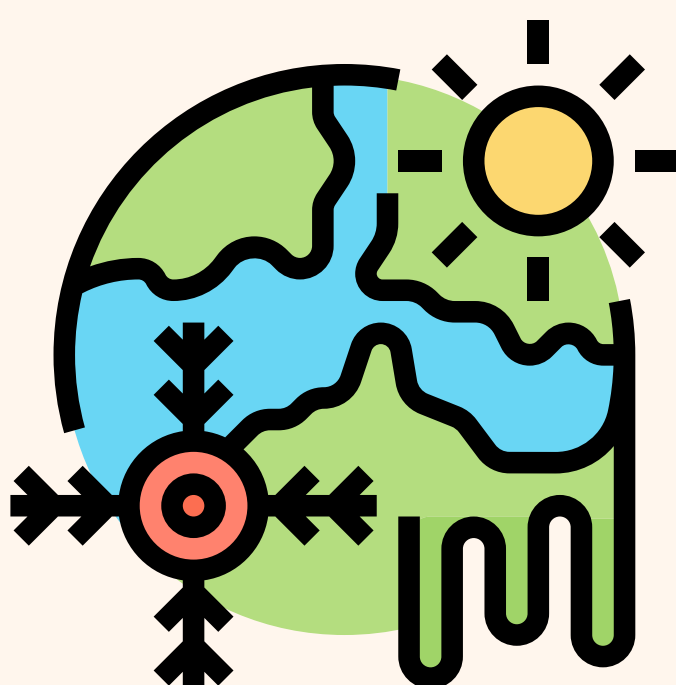
Close and secure the gate and any open points at the landfill

8

Secure your valubles

9

Make a plan





# GOOD, BETTER, BEST PRACTICES FOR CLASS I AND II MSW

## REMOVE STAGED MATERIALS

- Good: Secure using banding or cargo straps and store away from the river
- Better: Store them in a building or connex that is secured to the ground:
- Best: Move them to high ground



## LIQUIDS

- Good: secured with leak-proof lids.
- Better: stored with leak-proof lids inside a building or secured connex.
- Best: Secured with leak-proof lids moved to higher ground.

## STORE AND RELOCATE LEAD-ACID BATTERIES

- Good: in a tote with a lid.
- Better: in a tote with a secured lid in a secured place.
- Best: in a secure and covered container moved to higher ground.



## CLOSE AND SECURE

- Good: use a temporary fence to close the landfill.
- Better: use a chain link swing gate.
- Best: Use a chain-link fence and fill in any gaps between the ground and fence.



## SECURE LOOSE ITEMS

Store them inside the landfill and close the gate or move the items to high ground.



# GOOD, BETTER, BEST PRACTICES

## FOR CLASS I AND II MSW



### COVER WASTE

- Good: Consolidate waste and cover some waste.
- Better: Consolidate waste and cover with least 6" of material.

### LOCK AND SECURE

- Good: Secure the doors and securely stake the connex.
- Better: Secure the doors and chain the connex to a heavy object.
- Best: Move the connex to higher ground.



### STORE YOUR VALUBLES

- Good: Store the items in a waterproof safe.
- Better: Take your items with you.
- Best: Move the items to higher ground.

### HAVE A PLAN

- Good: Plan day before flood.
- Better: Plan during flood season.
- Best: Plan during a calm time.



### QUESTIONS?

Call your local ADEC solid waste specialist.

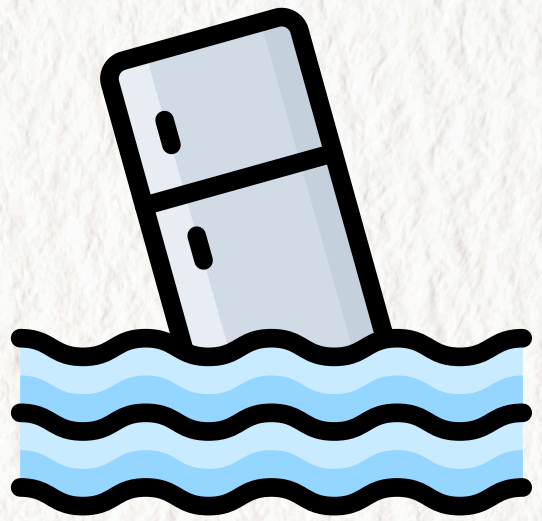


# AFTER THE FLOOD

## WASTE DISPOSAL AND CLEANUP

### HOUSEHOLD WASTE

Waste that will quickly spoil should be separated from other waste and debris in heavy duty or secure garbage cans to prevent the exposure to insects and other wildlife.

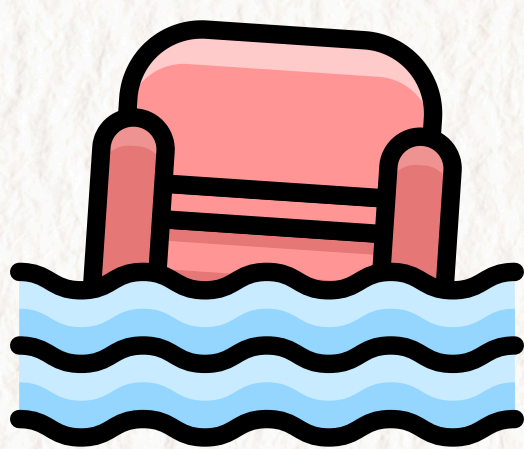


### FOOD WASTE

Do not keep food that may be spoiled or contaminated because the electric appliances went out. When in doubt, throw it out!

### HOUSEHOLD HAZARDOUS WASTE

Look for damaged or leaking containers of HHW and if needed, place them in secure containers and label it with the contents and the condition them.



### OTHER ITEMS

Place furniture, carpet, books, non-recyclable paper, and demolition debris together for collection and disposal



### RECYCLE

Branches, clean and non-treated wood, bricks and clean concrete can be stockpiled to be reused!