

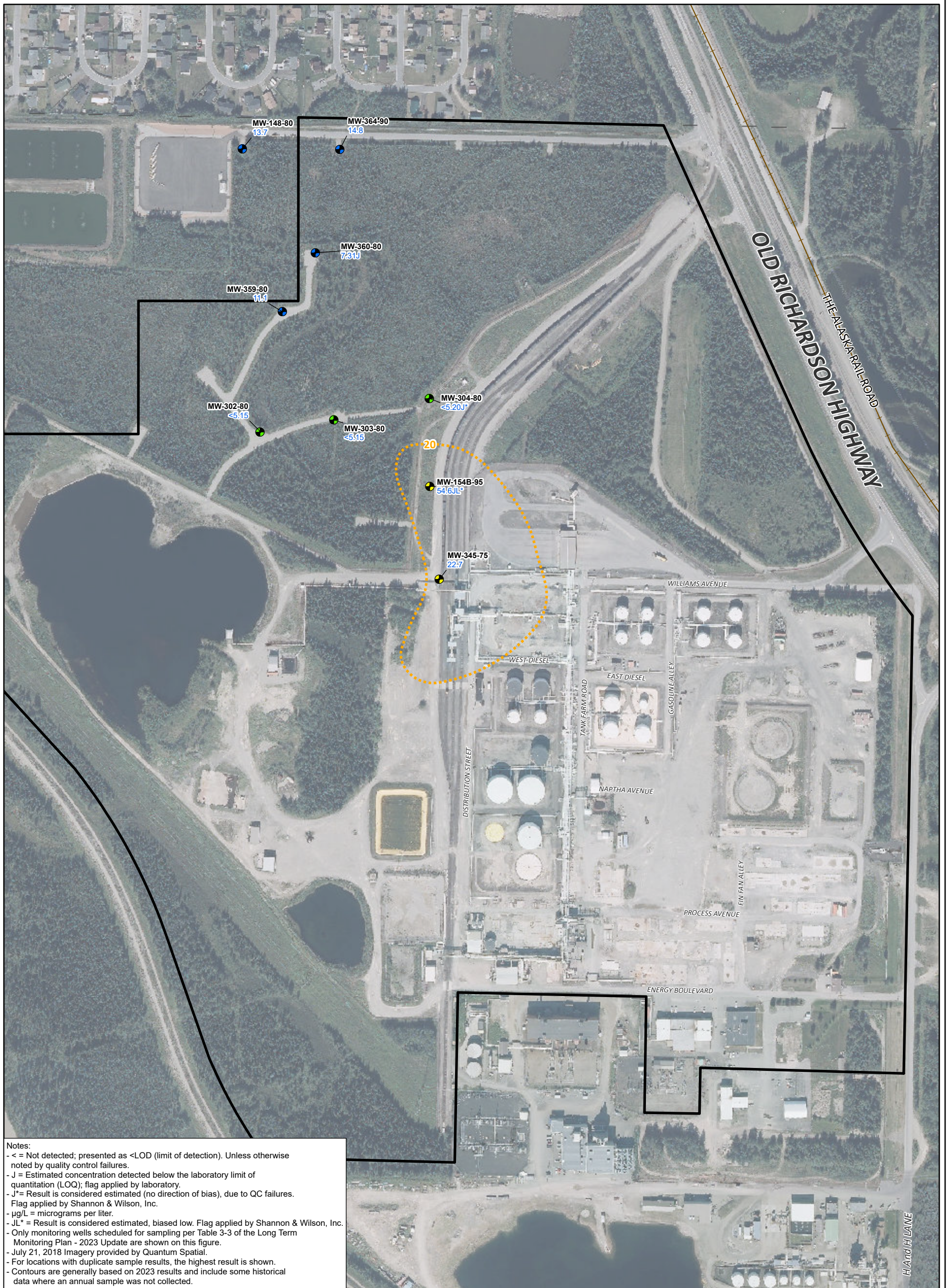
NORTH POLE TERMINAL, NORTH POLE, ALASKA
ANNUAL 2023 ONSITE GROUNDWATER MONITORING REPORT

ANNUAL 2023 ONSITE SULFOLANE GROUNDWATER ANALYTICAL RESULTS - 10 TO 55 FEET BELOW WATER TABLE



FIGURE

3-9

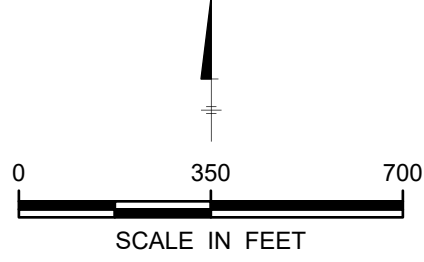


Legend

- Monitoring Well
- Approximate Sulfolane Isopleth in µg/L
- Property Boundary

Sulfolane Results

- Not Detected
- 3.14 - < 20 µg/L
- 20 - < 100 µg/L
- 100 - < 400 µg/L
- >400 µg/L



NORTH POLE TERMINAL, NORTH POLE, ALASKA
ANNUAL 2023 ONSITE GROUNDWATER MONITORING REPORT

ANNUAL 2023 ONSITE SULFOLANE GROUNDWATER ANALYTICAL RESULTS - 55 TO 90 FEET BELOW WATER TABLE

