



Sag River (Formerly Pump Station 4)



Local Response Conex

This Response Conex is located at the Sag River DOT Camp.

Contacts for access to this conex:

Mike Beck (Jim River Camp Lead) (907) 328-7125

mike.beck2@alaska.gov

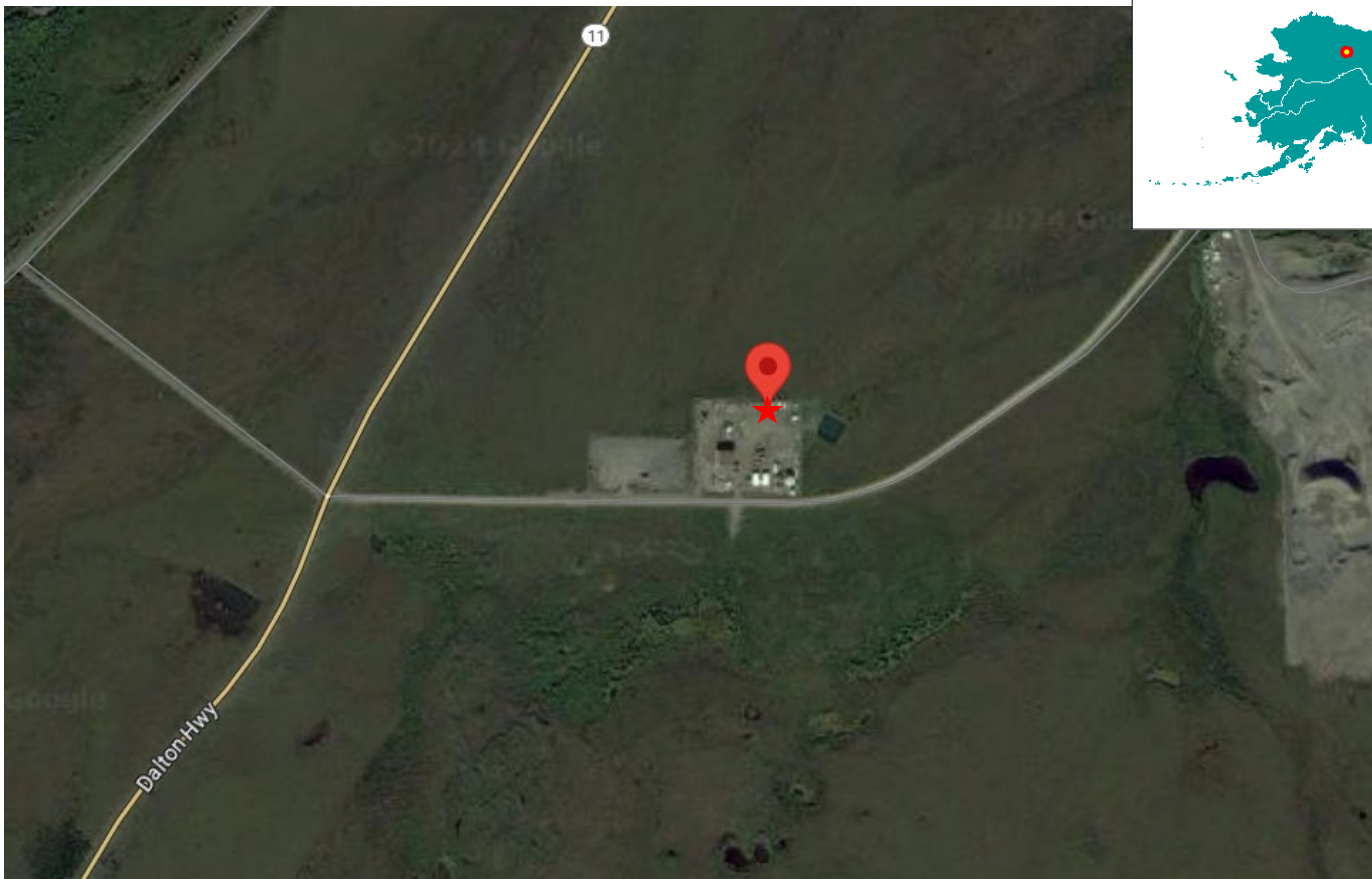
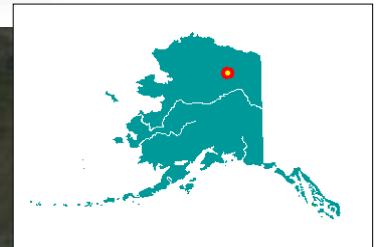


Fairbanks Responders (ADEC) (907) 451-2121

After Hours call (800) 478-9300

LOCATION MAP

68.76201190875776, -148.8695491848426



PUMP STATION 4 RESPONSE CONEX

QTY	UNIT	DESCRIPTION	USED DATE	QTY
SECURITY/LIGHTING				
20	ea	Rebar Stakes		
2	ea	Plywood, 8' x 5/8"		
CONTAINMENT				
2	ea	ADEC Hard Boom 6" X 6" x 50 foot sections		
1	ea	Rope, Nylon, 300' x 1/4"		
2	ea	Anchors, Bruce Boat, #16		
2	ea	Anchors Floats, 18"		
40	bags	Sandbags		
PUMP/TRANSFER LINE				
1	ea	Pump, Transfer 2" Camlock Fittings with 25' suction hose		
2	ea	Pipe, PVC, 2" x 10'		
2	ea	Pipe, PVC, 4" x 10'		
2	ea	Pipe, PVC, 6" x 10'		
1	ea	Drum Pump, Diaphragm		
1	ea	Piston hand pump		
RECOVERY				
1	ea	Elastec Drum Skimmer		
1	ea	Gasoline air compressor		
1	ea	Rope mop skimmer		
1	ea	Generator, Honda Gasoline		
4	ea	5 gallon fuel cans		
10	bundle	Absorbent boom 5" x 25'		
15	bundle	Absorbent pads (100 per bundle)		
STORAGE				
1	ea	55 gallon drum with removable top		
1	ea	Visqueen, 10 ml, 20' x 100'		
2	ea	Trash bags, 30 gallons. 10 mil boxes		
3	ea	55 gallon drum with steel lid		
SMALL TOOLS				
5	ea	Shovels, Sharp Point, Large. Handle		
5	ea	Shovels, Flat, Large. Handle		
1	ea	Sledge Hammer #8		
1	ea	Socket Set, 3/8" drive		
1	ea	Crescent Wrench, 10"		
1	ea	Vice grip wrench		
1	ea	Multi-bit screwdriver		
2	ea	Pliers, Channel lock		
1	ea	Hacksaw		
4	ea	Spare hacksaw blades		

PUMP STATION 4 RESPONSE CONEX

1	ea	Sledge Hammer #4		
2	ea	Teflon tape		
2	ea	Duct Tape, 50' rolls		
4	ea	5 gallon buckets		

If any of the items in the conex were used, please mark "X" in the USED column and indicate the quantity used. In addition, please fill out the portion below and send the modified form to the following address or fax:

ADEC/SPAR/PERP
 Attention: Robert Blea
 555 Cordova Street, 2nd Flr
 Anchorage, AK 99501 or Fax: 907-269-7687

 Conex Accessed By: (please print neatly)

 Association (Business, Agency, etc.)

ADEC Contact Information:

 Signature and Date

ADEC Fairbanks (907) 451-2121
 ADEC After Hours (800) 478-9300