



Division of Air Quality

# Bethel Road Dust Study

Air Monitoring and Quality Assurance Program

## What Is This Study?

The Alaska Department of Environmental Conservation (ADEC) is conducting a road dust study in spring 2025 in Bethel to assess the impact of road dust on ambient air quality. This initiative responds to community concerns about airborne dust during the spring breakup season. Five Environmental Beta Attenuation Monitors (E-BAMs) (pictured at right) will be used to collect data over a four-to-six-week period. These instruments measure airborne dust particles based on size, while also recording temperature and humidity.



## What Can the Community Do to Help?

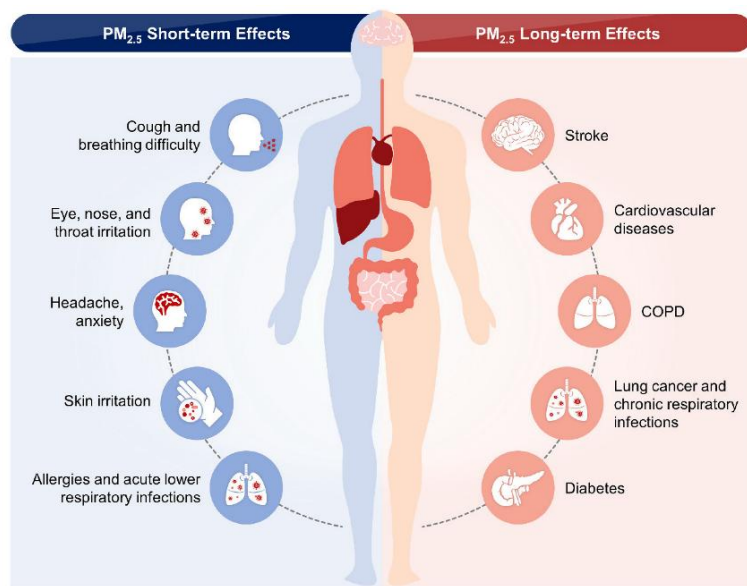
Your support helps make this study successful! Please avoid disturbing the monitoring equipment so it can collect accurate data.

This study was designed with input from Bethel residents, tribal organizations, and local officials who raised concerns about the health impacts from road dust.

Results will be shared with local partners and used to guide public health decisions and dust control efforts.

## Why Is This Important?

The study focuses on measuring concentrations of fine particulate matter (PM<sub>2.5</sub>) and coarse particulate matter (PM<sub>10</sub>). PM<sub>10</sub> particles can be inhaled into the upper respiratory tract, but the smaller PM<sub>2.5</sub> particles can penetrate deep into the lungs and bloodstream, posing greater health risks. The data collected will help local and tribal governments evaluate health impacts and guide future dust mitigation efforts.



Orutsararmiut  
Native Council



Learn more at: [dec.alaska.gov/air/air-monitoring/guidance/data-summaries/bethel-dust-study/](https://dec.alaska.gov/air/air-monitoring/guidance/data-summaries/bethel-dust-study/) or scan:

