



Department of Environmental Conservation's Air Monitoring Program Community-Based Air Monitoring Project

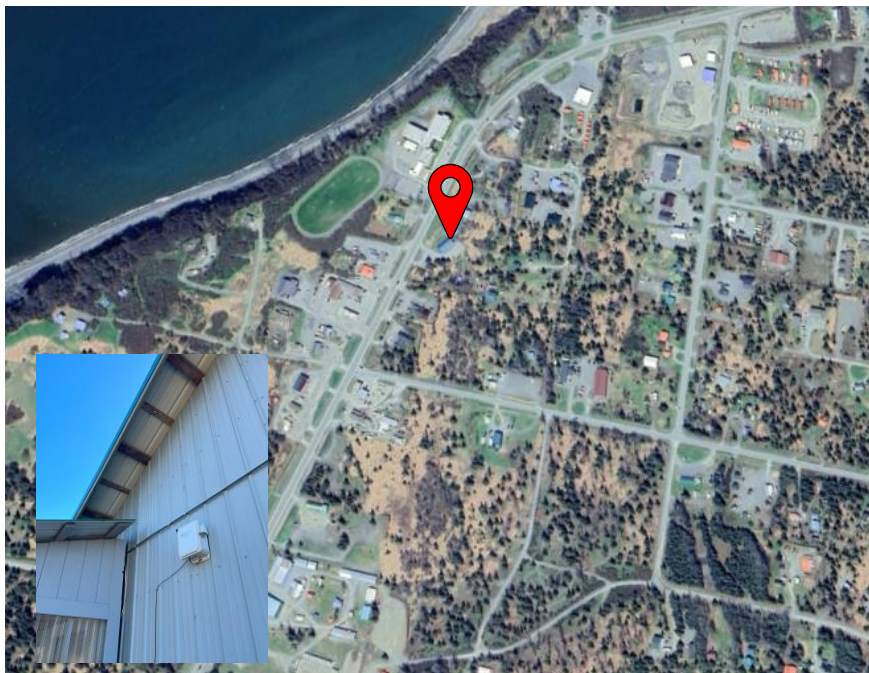
2024 Summer Season Air Quality Report for Ninilchik Community Library, Ninilchik, Alaska

The QuantAQ MODULAIR sensor in Ninilchik (15858 Sterling Hwy, Ninilchik, AK 99639) was installed on 05/13/2024.

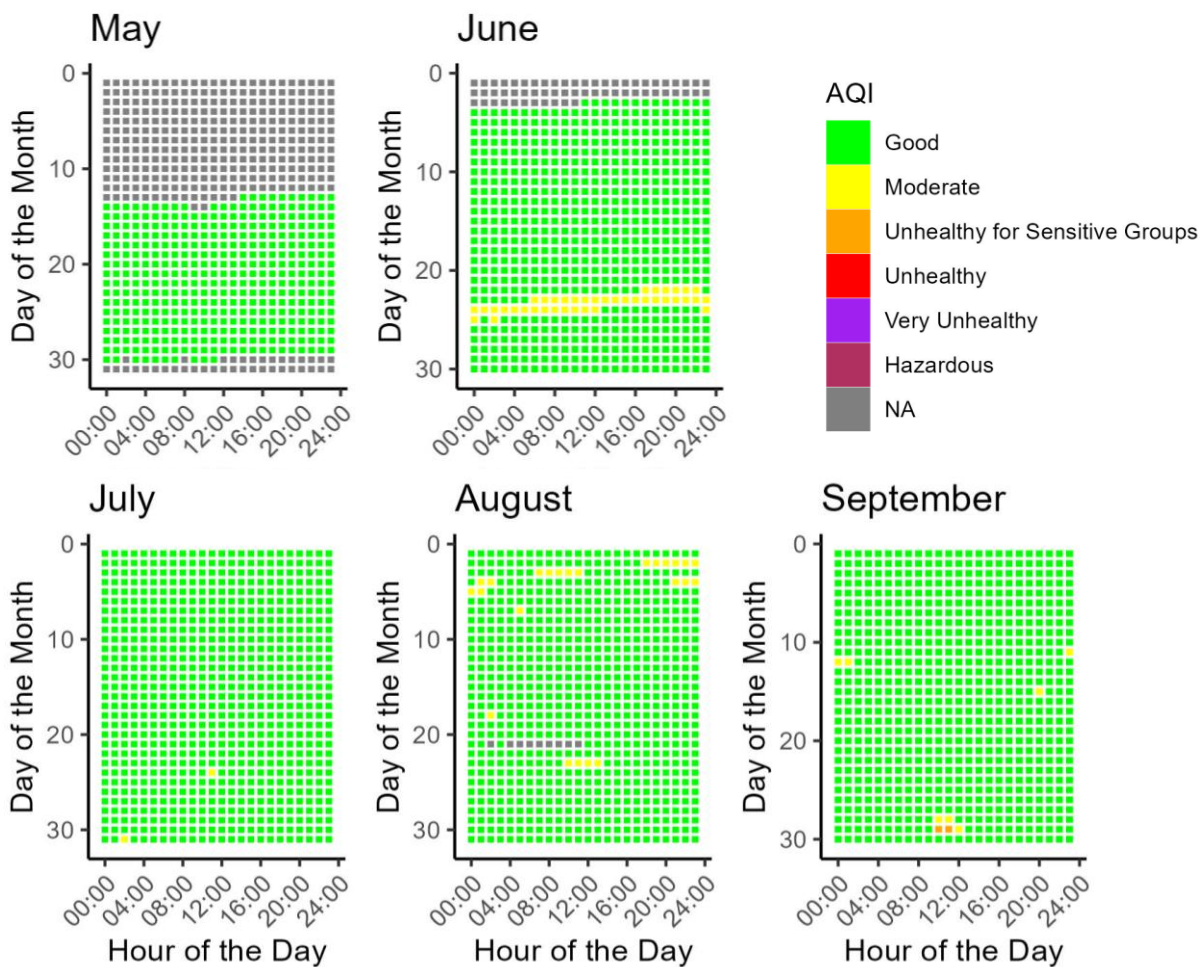
The sensor measures for carbon monoxide (CO), ozone (O₃), nitrogen oxide (NO), nitrogen dioxide (NO₂), particulate matter (PM_{2.5} and PM₁₀), temperature (°C), and relative humidity (RH).

Data is collected every minute and is then processed into hourly averages. The sensor in Ninilchik has run well since its installation in May of 2024; there have been no physical issues with the sensor.

This data report covers the date range of May 13, 2024, to September 30, 2024.

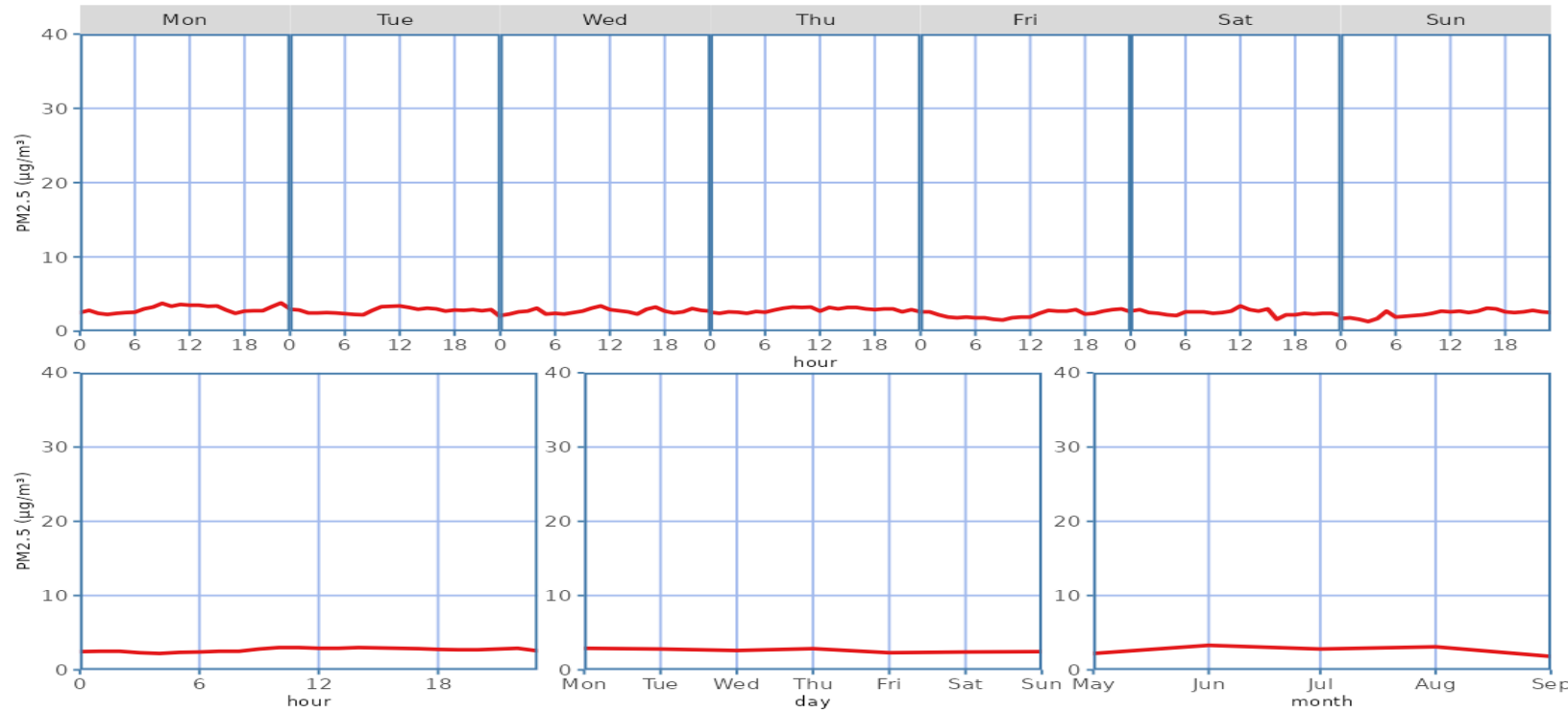


Daily PM_{2.5} Air Quality Index (AQI) for May 13, 2024 - September 30, 2024



2024 Summer Season Air Quality Report for Ninilchik Community Library

Median PM_{2.5} Concentrations for May 13, 2024 - September 30, 2024



Descriptive Statistics of Air Pollutants*

Parameter	1-hr PM _{2.5} (µg/m ³)	24-hr PM _{2.5} (µg/m ³)	1-hr PM ₁₀ (µg/m ³)	24-hr PM ₁₀ (µg/m ³)	1-hr O ₃ (ppb)	1-hr NO ₂ (ppb)	1-hr NO (ppb)	1-hr CO (ppb)
Min	0.10	0.50	1.00	0.50	6.90	2.98	1.43	241.10
Mean	3.12	3.10	24.01 **	23.87 **	26.63	15.57	2.45	297.37
1 st Max	41.90	12.20	451 **	72 **	109.30	27.03	22.17	617.25
2 nd Max	41.30	10.50	390 **	72 **	90.20	26.15	12.52	600.21

Data Discussion

Ninilchik’s PM_{2.5} ambient air quality for the summer 2024 season fell mostly in the “good” range of the Air Quality Index (AQI; more information about AQI is provided on page 3), with occasional, brief periods of “moderate” air quality in June through September. September experienced one two-hour instance of “unhealthy for sensitive groups” air quality. Diurnal patterns show little variability of PM_{2.5} concentrations across different days of the week. From May to September, PM_{2.5} concentrations remain low and steady with a slight increase during June to August.

* These statistics are based on preliminary data readings and are intended to provide a brief overview of sensor activity. Finalized data may be obtained upon request and through our annual statistical reports. Data from the community sensor network is non-regulatory and not comparable to the EPA’s National Ambient Air Quality Standards (NAAQS; more information about the EPA NAAQS is provided on page 3).

** PM10 particle sensors are influenced by weather events such as fog and snow due to hygroscopic effects, creating false maximum values that do not pose health risks.



Resources



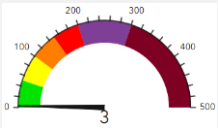
[Alaska Department of Environmental Conservation](#)



[EPA NAAQS Information](#)



[Air Quality Index \(AQI\) Basics](#)



[Real-Time AQI Data](#)



Data Access

To access historical data for your community's sensor, please email a request to: AMQA-Data-Request@alaska.gov . Data will be provided in Excel or .csv format.

Questions or Comments?

Please contact us!

Isaac Van Flein (Fairbanks): 907-451-2253 / isaac.vanflein@alaska.gov

Ayla Crosby (Anchorage): 907-269-7750 / ayla.crosby@alaska.gov

