



Department of Environmental Conservation's Air Monitoring Program Community-Based Air Monitoring Project

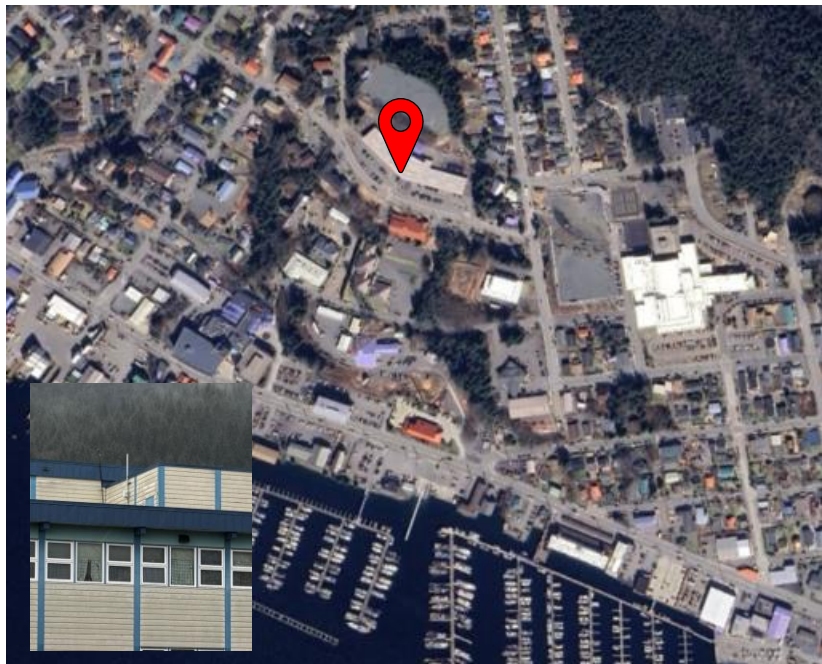
2024 Summer Season Air Quality Report for Ketchikan Indian Community, Ketchikan, Alaska

The QuantAQ MODULAIR sensor in Ketchikan (2940 Baranof Ave, Ketchikan, AK 99901) was installed on 01/31/2024.

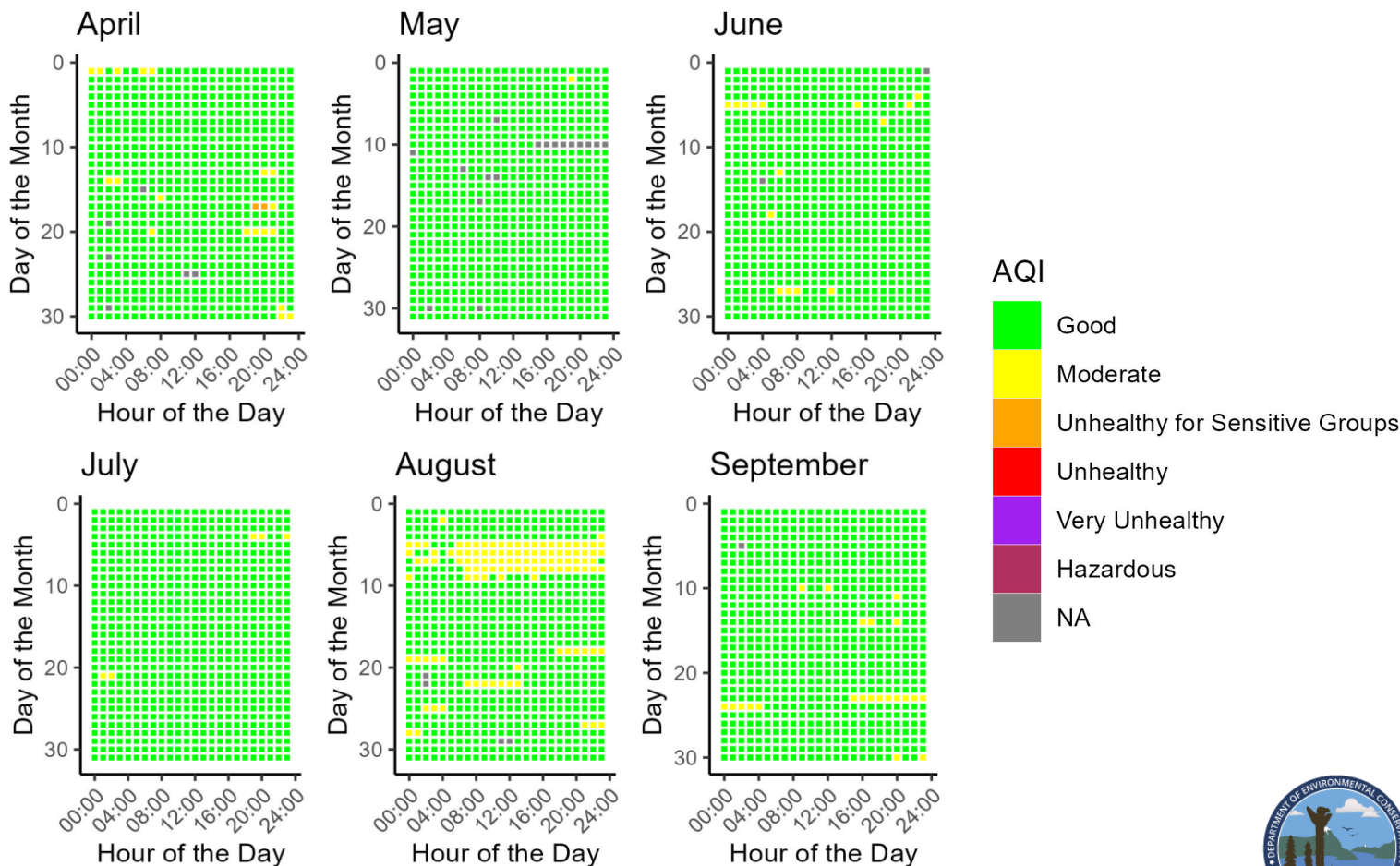
The sensor measures for carbon monoxide (CO), ozone (O₃), nitrogen oxide (NO), nitrogen dioxide (NO₂), particulate matter (PM_{2.5} and PM₁₀), temperature (°C), and relative humidity (RH).

Data is collected every minute and is then processed into hourly averages. The sensor in Ketchikan has run well since its installation in January of 2024; there have been no physical issues with the sensor.

This data report covers the date range of April 1, 2024, to September 30, 2024.

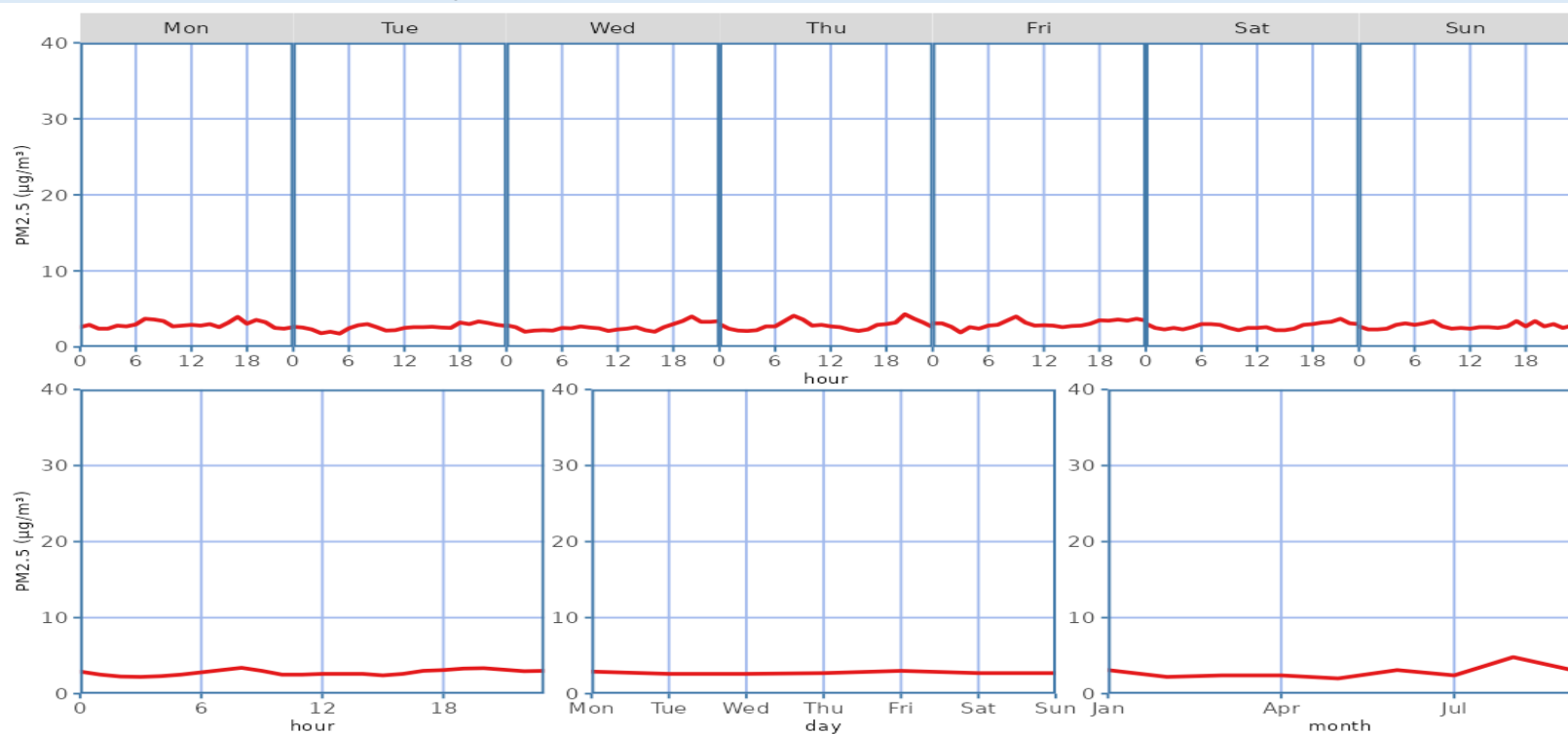


Daily PM_{2.5} Air Quality Index (AQI) for April 1, 2024 - September 30, 2024



2024 Summer Season Air Quality Report for Ketchikan Indian Community

Median PM_{2.5} Concentrations for April 1, 2024 - September 30, 2024



Descriptive Statistics of Air Pollutants*

Parameter	1-hr PM _{2.5} (µg/m ³)	24-hr PM _{2.5} (µg/m ³)	1-hr PM ₁₀ (µg/m ³)	24-hr PM ₁₀ (µg/m ³)	1-hr O ₃ (ppb)	1-hr NO ₂ (ppb)	1-hr NO (ppb)	1-hr CO (ppb)
Min	0.00	0.60	0.00	0.60	7.00	1.88	1.42	173.35
Mean	3.55	3.55	16.39 **	12.87 **	34.95	21.58	2.91	272.09
1 st Max	44.20	13.00	1797 **	88 **	60.62	45.65	85.76	589.98
2 nd Max	43.10	12.90	1788 **	85 **	59.85	45.39	65.49	580.77

Data Discussion

Ketchikan’s PM_{2.5} ambient air quality for the summer 2024 season fell mostly in the “good” range of the Air Quality Index (AQI; more information about AQI is provided on page 3), with brief periods each month reporting “moderate” values. Diurnal patterns show little variability of PM_{2.5} concentrations across different days of the week. From April to September, August showed the most significant spike of PM_{2.5}, potentially due to smoke transported from wildfires in Canada.

* These statistics are based on preliminary data readings and are intended to provide a brief overview of sensor activity. Finalized data may be obtained upon request and through our annual statistical reports. Data from the community sensor network is non-regulatory and not comparable to the EPA’s National Ambient Air Quality Standards (NAAQS; more information about the EPA NAAQS is provided on page 3).

** PM10 particle sensors are influenced by weather events such as fog and snow due to hygroscopic effects, creating false maximum values that do not pose health risks.



Resources



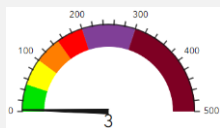
[Alaska Department of Environmental Conservation](#)



[EPA NAAQS Information](#)



[Air Quality Index \(AQI\) Basics](#)



[Real-Time AQI Data](#)



Data Access

To access historical data for your community's sensor, please email a request to: AMQA-Data-Request@alaska.gov . Data will be provided in Excel or .csv format.

Questions or Comments?

Please contact us!

Isaac Van Flein (Fairbanks): 907-451-2253 / isaac.vanflein@alaska.gov

Ayla Crosby (Anchorage): 907-269-7750 / ayla.crosby@alaska.gov

