

IAP Cover Sheet

Incident Name:

Drift River Terminal Flooding

Operational Period to be covered by IAP:

Period 2 (3/27/2009 16:00 - 3/28/2009 16:00)

Approved by:

Joe LoScioto FOSC :

Gary Folley SOSC :

RPIC :

[Signature]
John R Brown Deputy SOSC

Incident Action Plan

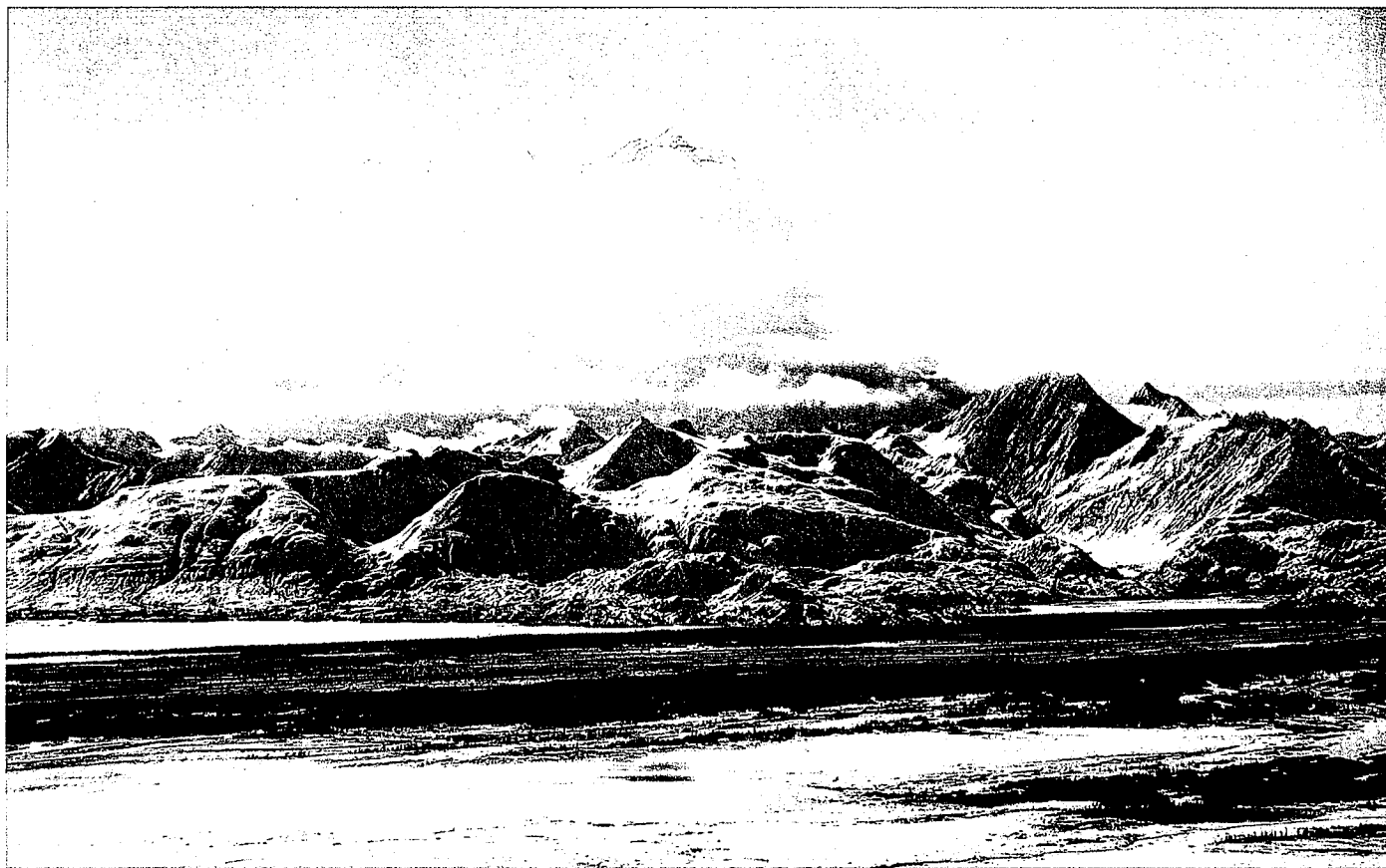
Volcanic eruption/flooding. Mount Redoubt initially erupted at 10:38 PM on March 22, 2009, followed by several other eruptions. The resultant lahars (or volcanic mudflows) caused extensive flooding at the Drift River Terminal. However, no oil or hazardous substance releases have been reported at this time.

View west across Drift River of small eruption cloud over Redoubt volcano.

Picture Date: March 26, 2009 16:08:16 AKDT

Image Creator: McGimsey, Game;

Image courtesy of AVO/USGS.



Prepared By:

Prepared Date/Time:

3/27/2009 14:13

IAP Cover Sheet

Printed: 3/27/2009 15:50

© 1997-2009 dbSoft, Inc.

Incident Details

Incident: Drift River Terminal Flooding	Prepared By: Kalyan, Mala	at 3/26/2009 12:55
Period: Period 1 (3/26/2009 16:00 - 3/27/2009 16:00)	Version Name: Default	

Incident Name: Drift River Terminal Flooding

Incident Number: 09239908201

Drill: ☐

Incident Date/Time: 3/22/2009 22:38

Time Zone: Alaska-Hawaii Daylight Time

Organizational Structure Type: Oil Spill

Affected Asset Type: Facility

Affected Asset:

Location: Drift River Terminal, West Side Cook Inlet

Latitude: 60.60000000

Longitude: -152.18333333

Person Reporting Incident: None

Person Contact Number(s):

Incident Description: Mt. Redoubt initially erupted on March 22, 2009 at 10:38 PM, followed by several other eruptions. The lahars or volcanic mud-flows caused extensive flooding at the Drift River Terminal Tank farm. The mud-flows are to a depth of six feet in the area of the runway and ballast tank. Slight overflow was observed into the tertiary containment. Pump houses were observed to be flooded. Numerous drums of petroleum products were scattered west of the ballast tank.

Weather Report

Incident: Drift River Terminal Flooding **Prepared By:** Petit, Bob **at** 3/27/2009 13:50
Period: Period 2 (3/27/2009 16:00 - 3/28/2009 16:00) **Version Name:** 3/27/2009 13:49

Present Conditions

Wind Speed:	10-15 mph	Wave Height:	
Wind Direction From The:	South	Wave Direction:	
Air Temperature:	30-40 Fahrenheit	Swell Height:	
Barometric Pressure:		Swell Interval:	
Humidity:	snow showers	Current Speed:	
Visibility:		Current Direction Toward:	
Ceiling:		Water Temperature:	
Next High Tide (Time):		Next Low Tide (Time):	
Next High Tide (Height):		Next Low Tide (Height):	
Sunrise:	06:48	Sunset:	19:35

Notes: BULLETIN - EAS ACTIVATION REQUESTED
FLASH FLOOD WARNING
NATIONAL WEATHER SERVICE ANCHORAGE AK
851 AM AKDT FRI MAR 27 2009

THE NATIONAL WEATHER SERVICE IN ANCHORAGE HAS ISSUED A

% FLASH FLOOD WARNING FOR...
DRIFT RIVER

% UNTIL 245 PM AKDT

% DUE TO THE ERUPTION OF MOUNT REDOUBT VOLCANO.

THE ERUPTION OF MOUNT REDOUBT CAN CAUSE MELTING SNOW AND ICE ON THE MOUNTAIN AND RESULT IN HIGH WATER AND FLASH FLOODING ALONG THE DRIFT RIVER VALLEY DRAINING FROM THE MOUNTAIN.

A FLASH FLOOD WARNING MEANS THAT FLOODING IS IMMINENT OR OCCURRING. IF YOU ARE IN THE WARNING AREA MOVE TO HIGHER GROUND IMMEDIATELY. RESIDENTS LIVING ALONG STREAMS AND CREEKS SHOULD TAKE IMMEDIATE PRECAUTIONS TO PROTECT LIFE AND PROPERTY. DO NOT ATTEMPT TO CROSS SWIFTLY FLOWING WATERS OR WATERS OF UNKNOWN DEPTH BY FOOT OR BY AUTOMOBILE.

LAT...LON 6102 15299 6077 15214 6057 15230 6088 15302

\$\$
WWAK71PAFC_AKZ145

AKZ145-272300-
/X.CON.PAFC.AF.Y.0006.000000T0000Z-090327T2300Z/
SUSITNA VALLEY-
INCLUDING THE CITIES OF...TALKEETNA...WILLOW...CANTWELL
1216 PM AKDT FRI MAR 27 2009

...ASHFALL ADVISORY REMAINS IN EFFECT UNTIL 3 PM AKDT THIS AFTERNOON SOUTH AND WEST OF TALKEETNA...

AN ASHFALL ADVISORY REMAINS IN EFFECT UNTIL 3 PM AKDT THIS AFTERNOON SOUTH AND WEST OF TALKEETNA.

Weather Report

Incident:	Drift River Terminal Flooding	Prepared By:	Petit, Bob	at 3/27/2009 13:50
Period:	Period 2 (3/27/2009 16:00 - 3/28/2009 16:00)	Version Name:	3/27/2009 13:49	

A NEW ERUPTION AT MOUNT REDOUBT HAS OCCURRED AT 841 AM FRIDAY
SENDING ASH TO 50000 FT. ASH FROM THE ERUPTION AT 1148 PM
THURSDAY CONTINUES TO LINGER IN THE AREA. MINOR ASHFALL OF A
TRACE TO ONE EIGHTH INCH IS EXPECTED THROUGH THIS AFTERNOON.

MOUNT REDOUBT REMAINS ACTIVE AND ADDITIONAL ERUPTIONS ARE
POSSIBLE.

PRECAUTIONARY/PREPAREDNESS ACTIONS...

AN ASHFALL ADVISORY MEANS THAT ASH WILL BE DEPOSITED IN THE
ADVISORY AREA. PEOPLE IN AREAS OF ASHFALL SHOULD SEAL WINDOWS AND
DOORS. PROTECT ELECTRONICS AND COVER AIR INTAKES AND OPEN WATER
SUPPLIES. MINIMIZE DRIVING. LISTEN TO YOUR RADIO STATION FOR
FURTHER INFORMATION.

&&

\$\$

FPAK51PAFC_AKZ145

AKZ145-280000-
SUSITNA VALLEY-
INCLUDING...TALKEETNA...WILLOW...CANTWELL
907 AM AKDT FRI MAR 27 2009

...ASHFALL ADVISORY REMAINS IN EFFECT UNTIL 3 PM AKDT THIS AFTERNOON
SOUTH AND WEST OF TALKEETNA...

.TODAY...MINOR ASHFALL SOUTH AND WEST OF TALKEETNA. SNOW SHOWERS.
SNOW ACCUMULATION 1 TO 3 INCHES. HIGHS IN THE UPPER 20S TO UPPER 30S.
SOUTH WIND 10 TO 15 MPH.

.TONIGHT...SNOW SHOWERS. SNOW ACCUMULATION 1 TO 2 INCHES. LOWS IN
THE LOWER 20S EXCEPT 5 TO 10 ABOVE TOWARD THE PARK. VARIABLE WIND
10 MPH.

.SATURDAY...CLOUDY WITH SCATTERED SNOW SHOWERS. HIGHS IN THE MID
20S TO MID 30S. VARIABLE WIND 10 MPH.

.SATURDAY NIGHT...SNOW ALONG THE ALASKA RANGE. ELSEWHERE...CLOUDY
WITH A CHANCE OF SNOW. LOWS 15 TO 25. VARIABLE WIND 10 MPH.

.SUNDAY...CLOUDY WITH A CHANCE OF SNOW. HIGHS IN THE UPPER 20S TO
UPPER 30S. NORTHEAST WIND 10 TO 15 MPH.

.SUNDAY NIGHT...CLOUDY WITH SCATTERED SNOW SHOWERS. LOWS 15 TO
25.

.MONDAY AND MONDAY NIGHT...CLOUDY WITH A CHANCE OF SNOW. HIGHS
35 TO 45. LOWS IN THE TEENS.

.TUESDAY...PARTLY CLOUDY. HIGHS IN THE 30S.

.TUESDAY NIGHT...MOSTLY CLEAR. LOWS 5 TO 15 ABOVE.

.WEDNESDAY...PARTLY CLOUDY. HIGHS IN THE 30S.

.WEDNESDAY NIGHT AND THURSDAY...MOSTLY CLOUDY. LOWS IN THE TEENS.
HIGHS IN THE 30S.

&&

TEMPERATURE / PRECIPITATION

TALKEETNA 38 23 35 / 100 80 60

Weather Report

Incident: Drift River Terminal Flooding Prepared By: Petit, Bob at 3/27/2009 13:50
Period: Period 2 (3/27/2009 16:00 - 3/28/2009 16:00) Version Name: 3/27/2009 13:49

24 Hour Forecast

Sunrise:	06:00	Sunset:	19:00
High Tide (Time):	3/27/2009 04:39	High Tide (Time):	3/27/2009 05:10
High Tide (Height):	22.48 feet	High Tide (Height):	21.40 feet
Low Tide (Time):	3/27/2009 11:16	Low Tide (Time):	3/27/2009 11:22
Low Tide (Height):	-2.13 feet	Low Tide (Height):	0.43 feet

Forecast:

48 Hour Forecast

Sunrise:	06:00	Sunset:	19:00
High Tide (Time):	3/27/2009 04:39	High Tide (Time):	3/27/2009 17:10
High Tide (Height):	22.48 feet	High Tide (Height):	
Low Tide (Time):	3/27/2009 11:16	Low Tide (Time):	
Low Tide (Height):	-2.13	Low Tide (Height):	

Forecast:

ICS 201-1 - Incident Briefing Map/Sketch

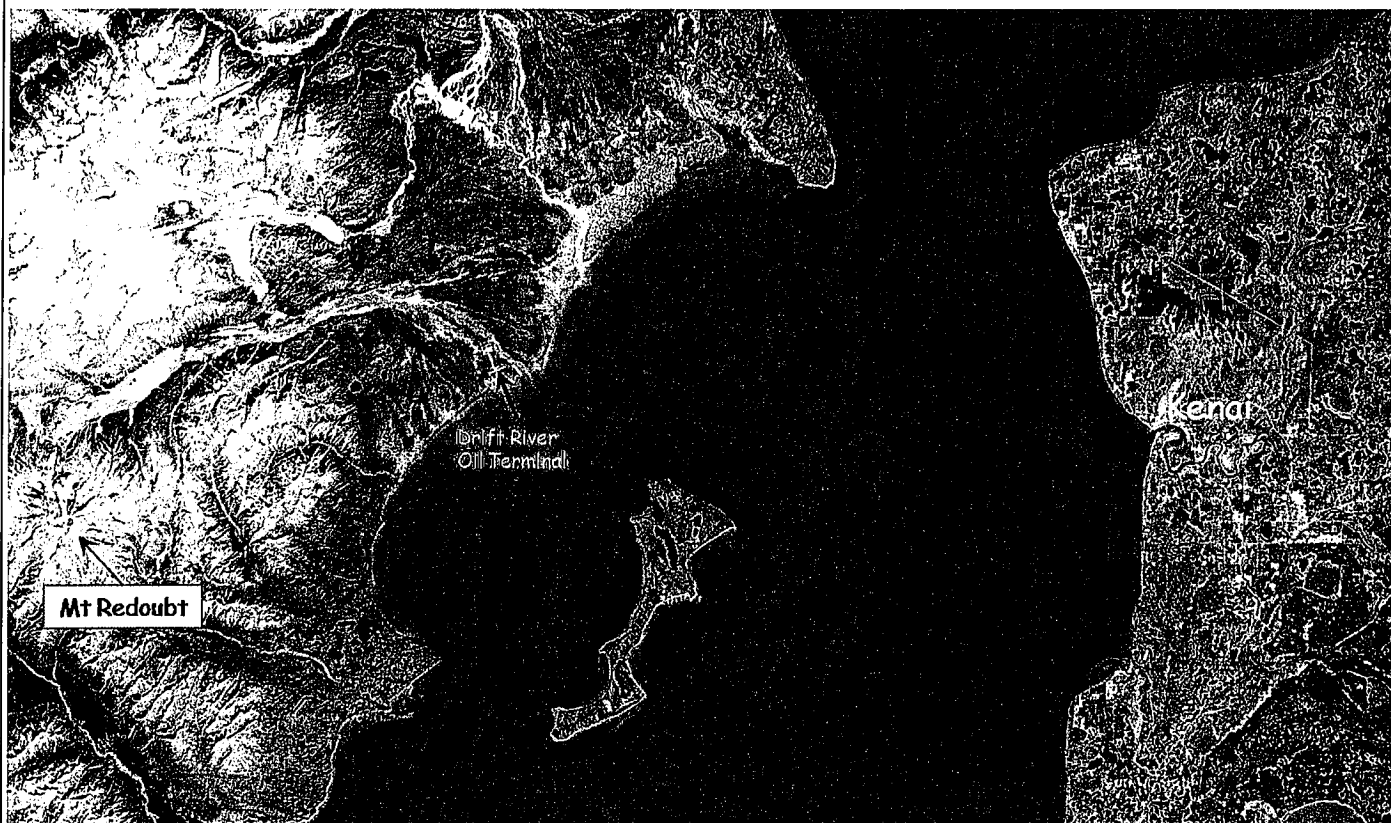
Incident: Drift River Terminal Flooding

Prepared By: Petit, Bob

at 3/27/2009 14:02

Period: Period 2 (3/27/2009 16:00 - 3/28/2009 16:00)

Version Name: 3/27/2009 14:01



ICS 202 - General Response Objectives		
Incident: Drift River Terminal Flooding	Prepared By: Kalyan, Mala	at 3/27/2009 13:55
Period: Period 2 (3/27/2009 16:00 - 3/28/2009 16:00)	Version Name: March 27, 2009	
Overall and Strategic Objectives		
	Assigned To	Status
Ensure the safety of citizens and response personnel. Address the risk posed by actual/potential ashfall to responders. Develop plans for increased monitoring of lahars thru placement of additional instrumentation by AVO.		
Monitor Damage Assessment of Drift River Terminal, Tanks, Pipelines, and Cargo Transfer Facility		
Coordinate and participate in Overflights. Ash plume and flight safety conditions will be monitored at all times.		
Coordinate with Alaska Volcano Observatory for Notification of Volcanic Eruptions, and Flood Warnings.		
Identify Regulatory Requirements, for Facility Restart of Operations		
Identify Oil Storage Capacity and Inventory Management of Facilities		
Continue to Determine and update information on Resources at Risk		
Monitor Plans and Timeframe for Effecting Repairs Necessary for Resumption of Operations		
Identify and Maintain Stakeholder Communications & Engagement		
Conduct a risk-based decision process prior to movement of any crude oil product from the facility.		
Identify spill response resources available (CISPRI, CIPL, and Chevron) - status, deployment times, and location.		
Operational Period Command Emphasis (Safety Message, Priorities, Key Decisions/Directions)		
<div> <div>Approved By</div> <div> : _____ </div> </div>		
ICS 202 - General Response Objectives	Printed: 3/27/2009 15:51	Page 1 of 1 © 1997-2009 dbSoft, Inc.

ICS 204 - Assignment List

Incident: Drift River Terminal Flooding

Prepared By: Brown, John

at 3/27/2009 16:49

Period: Period 2 (3/27/2009 16:00 - 3/28/2009 16:00)

Branch: Planning/ Environmental

Division/Group/Staging: Planning/ Environmental

Operations Personnel

Title	Name	Affiliation	Contact Number(s)
Environmental Unit Leader	Mala Kalyan	ADEC	269-7435
Environmental Unit	Gayle Martin	Department of Fish and C	
Environmental Unit	Clark Cox	ADNR	

Assignments

Determine resources at risk, wildlife, historical properties, and property owners

Reviewed By Signatures - (PSC):

(OSC):

ICS 204 - Assignment List

Incident: Drift River Terminal Flooding

Prepared By: Brown, John

at 3/27/2009 16:52

Period: Period 2 (3/27/2009 16:00 - 3/28/2009 16:00)

Branch: Planning/ Spill Response Resources Availabili

Division/Group/Staging: Planning/ Spill Response Resources Availabili

Operations Personnel

Title	Name	Affiliation	Contact Number(s)
Operations Section Chief	Steve Russel	ADEC	(907-262-5210 ext 222

Assignments

Determine response resources available in Cook Inlet to respond to a spill release at the Drift River Terminal

Special Instructions for Division / Group

None

Reviewed By Signatures - (PSC):

(OSC):

ICS 204 - Assignment List			
Incident: Drift River Terminal Flooding		Prepared By: Brown, John at 3/27/2009 15:47	
Period: Period 2 (3/27/2009 16:00 - 3/28/2009 16:00)		Branch: Planning/ Inventory Managment of Facility	
Division/Group/Staging: Planning/ Inventory Managment of Facility			
Operations Personnel			
Title	Name	Affiliation	Contact Number(s)
Planning Section Chief	Larry Iwamoto	ADEC	
Technical Specialist (T/S)	Shannon Dewandel	ADEC	
Assignments			
Work with Chevron to determine oil inventory at the Drirt River Terminal Facility, which include all tanks, and pipelines			
Tactical Objective			
Determine all volumes of Crude oil and Diesel at the Facility			
Location of Work			
Anchorage			
Special Equipment / Supplies Needed for Assignment			
None at this time			
Special Site-Specific Safety Considerations			
All field work would require appropreate PPE			
Reviewed By Signatures - (PSC):		(OSC):	
ICS 204 - Assignment List		Printed: 3/27/2009 15:51	Page 1 of 1 © 1997-2009 dbSoft, Inc.

ICS 204 - Assignment List			
Incident: Drift River Terminal Flooding		Prepared By: Brown, John at 3/27/2009 15:44	
Period: Period 2 (3/27/2009 16:00 - 3/28/2009 16:00)		Branch: Operations/ Situation Overflights	
Division/Group/Staging: Operations/ Situation Overflights			
Operations Personnel			
Title	Name	Affiliation	Contact Number(s)
Operations Section Chief	Steve Russel	ADEC	(907-262-5210 ext 222
Air Support Group	Neil Huddleston	ADEC	
Assignments			
Participate in facility overflights			
Special Instructions for Division / Group			
Use Digital video and cameras to document overflight information.			
Tactical Objective			
Monitor and coordinate overflight information			
Location of Work			
Anchorage/ Soldotna			
Special Equipment / Supplies Needed for Assignment			
Digital video camera and regular digital camera			
Special Site-Specific Safety Considerations			
Monitor reports of volcanic eruptions, no flying if there is anychace of encountering ash while flying			
Reviewed By Signatures - (PSC):		(OSC):	
ICS 204 - Assignment List		Printed: 3/27/2009 15:51	Page 1 of 1 © 1997-2009 dbSoft, Inc.

ICS 204 - Assignment List			
Incident: Drift River Terminal Flooding		Prepared By: Brown, John at 3/27/2009 14:54	
Period: Period 2 (3/27/2009 16:00 - 3/28/2009 16:00)		Branch: Planning/ Facility Adequacy	
Division/Group/Staging: Planning/ Facility Adequacy			
Operations Personnel			
Title	Name	Affiliation	Contact Number(s)
Planning Section Chief	Larry Iwamoto	ADEC	
Facility/ Regulator Requirement Ass	Shannon DeWandel	ADEC	
Assignments			
Identify Regulatory Requirements for facility restart operations.			
Tactical Objective			
Identify regulatory requirements by ADEC, U.S. Coast Guard, Department of Transportation, EPA, in preperation of removing oil from tanks 1 and 2			
Location of Work			
Anchorage			
Special Environmental Considerations			
Coordination with all State Trustee Agencies, Coast Guard, EPA, and Federal DOT			
Special Site-Specific Safety Considerations			
None at this time			
Reviewed By Signatures - (PSC):		(OSC):	
ICS 204 - Assignment List		Printed: 3/27/2009 15:51	Page 1 of 1 © 1997-2009 dbSoft, Inc.

ICS 205 Communications Plan – Contact Information

MT REDOUBT ERUPTION (DRIFT RIVER TERMINAL) – FEDERAL/STATE IMT/CMT CONTACT LIST (March 27, 2009)				
Name	Agency	Position/Area of Expertise/Function	Email Address	Phone
Anne Besser	USCG Sector Anchorage	USCG Situation Unit	Anne.E.Besser@uscg.mil	271-6700
John Brown	DEC-PERP	Deputy SOSC	John.Brown@alaska.gov	269-7688
Matt Carr	EPA	FOSC (Inland)	Carr.matthew@epa.gov	271-3616
Clark Cox	DNR	Environmental Unit	Clark.cox@alaska.gov	269-8565
Cathy Foerster	DOA-AOGCC	Agency Representative	Cathy.foerster@alaska.gov	793-1221
Gary Folley	DEC-PERP	SOSC	Gary.Folley@alaska.gov	262-5210, X234
Sara Francis	USCG Sector Anchorage	PIO-JIC	Sara.G.Francis@uscg.mil	271-6700
Dale Gardner	DEC-PERP	Liaison	Dale.gardner@alaska.gov	269-7682
Young Ha	DEC-PERP	IAP/Environmental Unit	Young.ha@alaska.gov	269-3064
Mark Hamilton	USCG Sector Anchorage	FOSC Sector Anchorage	Mark.H.Hamilton@uscg.mil	271-6700
Geoff Harben	DEC-PERP	Logistics Section Chief	Geoff.harben@alaska.gov	465-5234
Tim Hoffman	DEC-Water	PIO-JIC	Timothy.hoffman@alaska.gov	269-0598
Rob Hollinger	USCG Sector Anchorage		Rob.E.Hollinger@uscg.mil	271-6700
Neil Huddleston	DEC-PERP	Operations	Neil.huddleston@alaska.gov	269-7542
Larry Iwamoto	DEC-PERP	State Planning Section Chief	Larry.Iwamoto@alaska.gov	269-7683
Mala Kalyan	DEC-PERP	IAP/Environmental Unit Leader	Mala.kalyan@alaska.gov	269-7435
Joe LoSciuto	USCG Sector Anchorage	Deputy FOSC	Joseph.J.LoSciuto@uscg.mil	271-6700
Gayle Martin	ADF&G	Environmental Unit	Gayle.martin@alaska.gov	267-2541
Dave McMahan	DNR SHPO	Environmental Unit	Dave.mcmahan@alaska.gov	269-8723
Shannon Miller	DNR	Environmental Unit	Shannon.miller@alaska.gov	269-8555
Mike Franklin	USCG MSD Kenai			
Stephen Pearson	USCG Sector Anchorage		Steven.T.Pearson@uscg.mil	271-6700
Bob Petit	DEC-PERP	Situation Unit Leader	Robert.petit@alaska.gov	262-5210, X236
Jim Robertson	USCG	Deputy FOSC	James.B.Robertson@uscg.mil	271-6700
Weld Royal	DEC-CO	Public Information Officer	Weld.royal@alaska.gov	465-5009

MT REDOUBT ERUPTION (DRIFT RIVER TERMINAL) – FEDERAL/STATE IMT/CMT CONTACT LIST (March 27, 2009)					
Steve Russell	DEC-PERP		Operations Section Chief	Steve.russell@alaska.gov	262-5210, X222
Dave Simonds	USCG Sector Anchorage		USCG Liaison	david.d.simonds@uscg.mil	271-6700
Camille Stephens	DEC-PERP		JIC Website	Camille.stephens@alaska.gov	465-5242
Jim Stevenson	DEC-PERP		Logistics	Jim.stevenson@alaska.gov	344-7380
Richard Vanderhoek	DNR SHPO		Environmental Unit	Richard.vanderhoek@alaska.gov	269-8728
Frank Wesser	DEC-PERP		Situation Unit	Frank.wesser@alaska.gov	269-3062
John Whitney	NOAA		Scientific Support Coordinator	John.whitney@noaa.gov	271-3139
Alan Wien	DEC-PERP		Dpty Planning Section Chief/Liaison	Alan.wien@alaska.gov	376-1865
Technical Specialists					
Roger Burleigh	DEC-IPP		Tech Specialist-Engineering	Roger.burleigh@alaska.gov	269-7538
Shannon DeWandel	DEC-IPP		Tech Specialist – C-Plans	Shannon.dewandel@alaska.gov	269-7541
Allison Iversen	DNR-PSIO		Tech Specialist	allison.iversen@alaska.gov	269-8806
Tom Johnson	PHSMA		Primary contact	Donald.t.johnson@dot.gov	271-4934
Chris Nye	DNR		Div of Geological and Geophysical Surveys	cnve@giseis.alaska.edu	474-7430
STATE CMT					
Larry Dietrick	DEC-SPAR		CMT Lead	Larry.dietrick@alaska.gov	465-5255
Bob Mattson	DEC PERP		DEC CMT – Response Advisor	Bob.mattson@alaska.gov	465-5349
Kevin Banks	DNR		Director, Div of Oil and Gas	Kevin.banks@alaska.gov	269-8781
Ira Rosen	DEC-IPP		Alaska Risk Assessment	Ira.rosen@alaska.gov	465-6219
Betty Schorr	DEC-IPP		DEC CMT – C-Plan Advisor	betty.schorr@alaska.gov	269-7566
Bob Swenson	DNR		Director, Div of Geological and Geophysical Surveys (CMT)	Bob.swenson@alaska.gov	451-5001

ICS 206 - Medical Plan

Incident: Drift River Terminal Flooding **Prepared By:** Kalyan, Mala **at** 3/27/2009 14:48
Period: Period 2 (3/27/2009 16:00 - 3/28/2009 16:00) **Version Name:** March 27, 2009

Medical Aid Stations

Name	Location	Paramedics (On-Site)	Phone	Radio
AK Air National Guard	Anchorage, AK	Yes	907-428-7230	
Fairweather Inc.	Anchorage, AK	Yes	907-258-3446	

Transportation (Ground and/or Air Ambulances Services)

Name	Location	Paramedics	Phone	Radio
Providence Life Flight	Anchorage, AK		907-243-5433	
Security Aviation	Anchorage, AK	No	(907) 248-2677	N

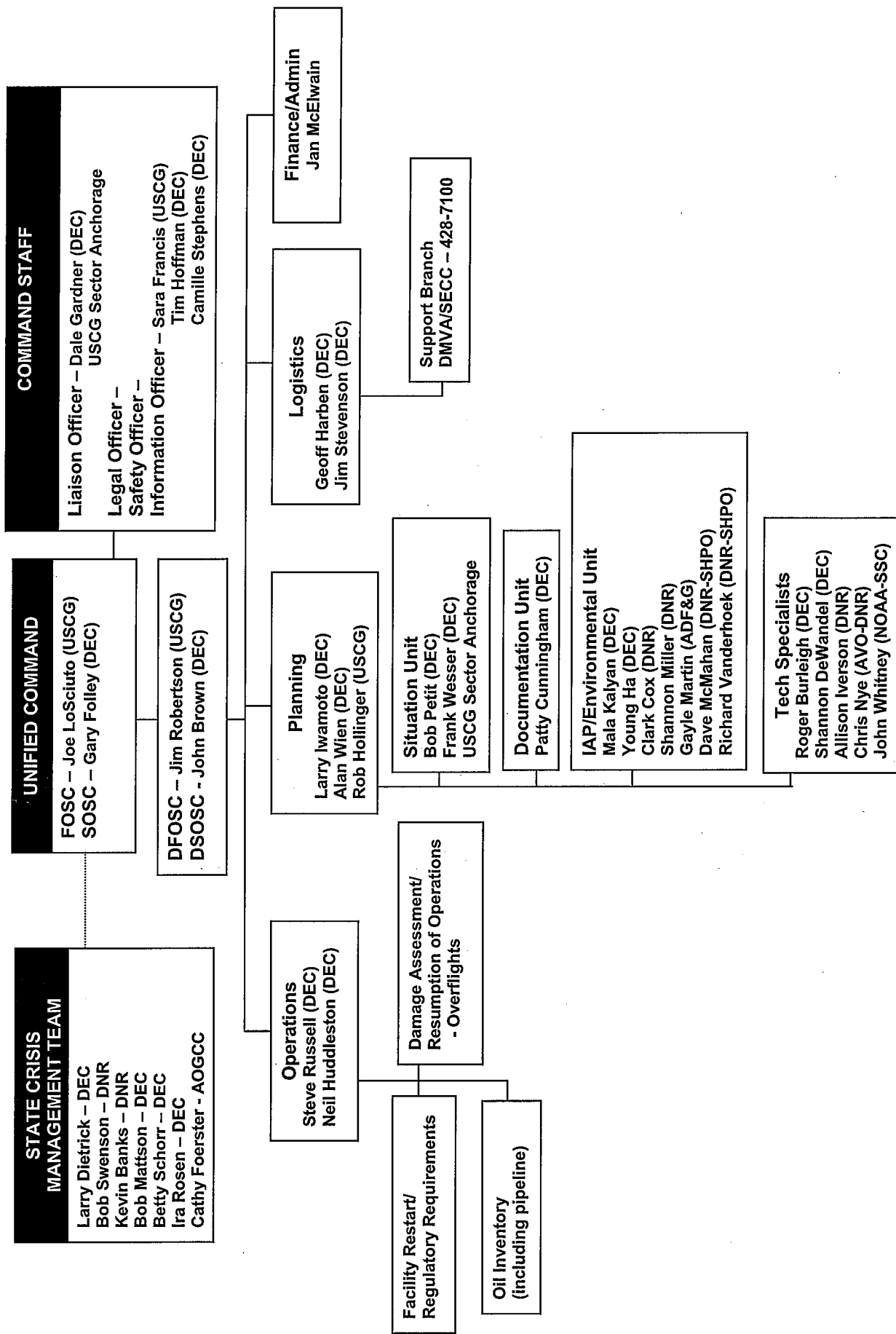
Hospitals

Name	Location	Helipad	Burn Center	Phone	Radio
Alaska Native Medical Center	Anchorage, AK			(907) 563-2662	
Alaska Regional Hospital	Anchorage, AK	Yes	No	(907) 276-1130/175	
Providence Alaska Medical Center	Anchorage, AK	Yes	Yes	(907) 562-2211	
South Peninsula Hospital	Homer, AK			(907) 235-8101	
Central Peninsula General Hospital	Soldotna, AK			(907) 262-4404 (24	
Peninsula Medical Center	Kenai, AK			907-262-9341	

Special Medical Emergency Procedures

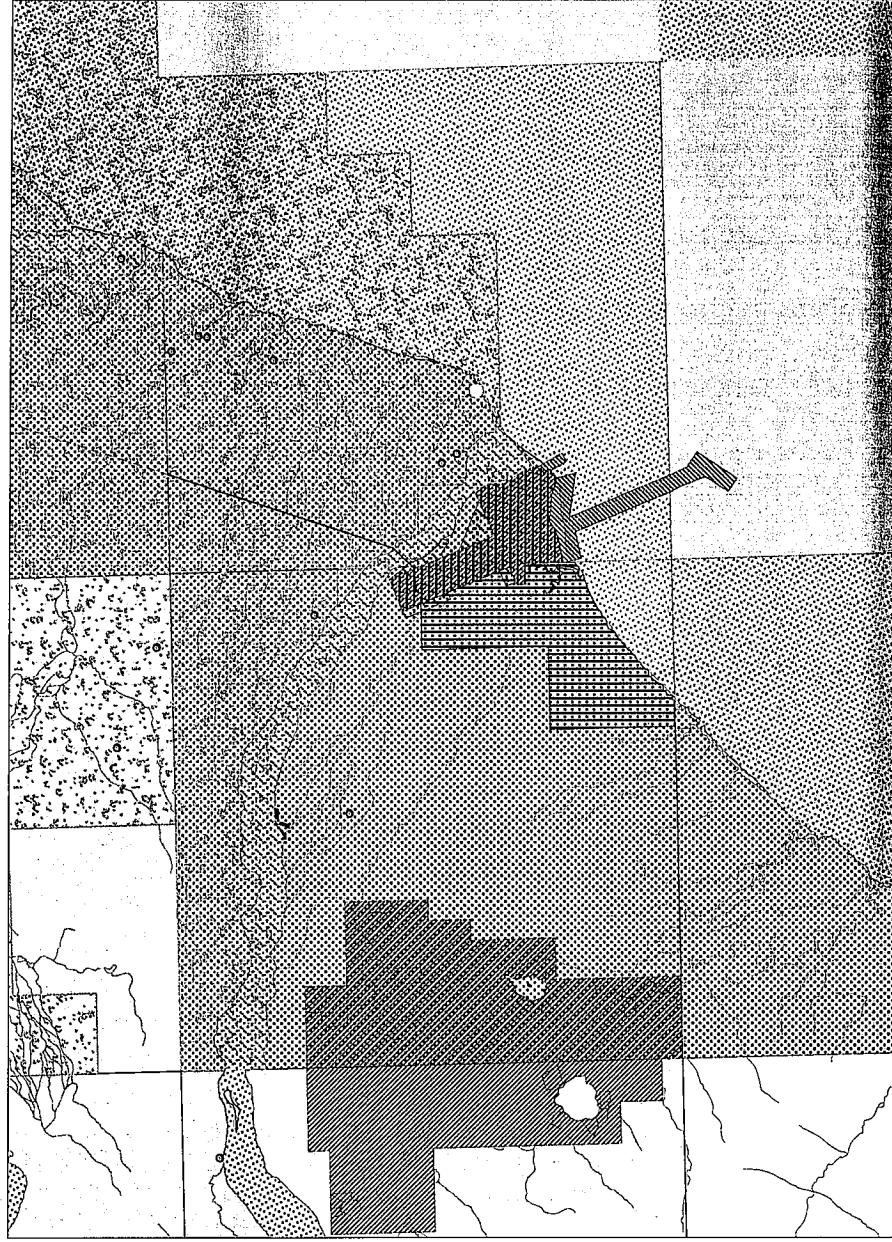
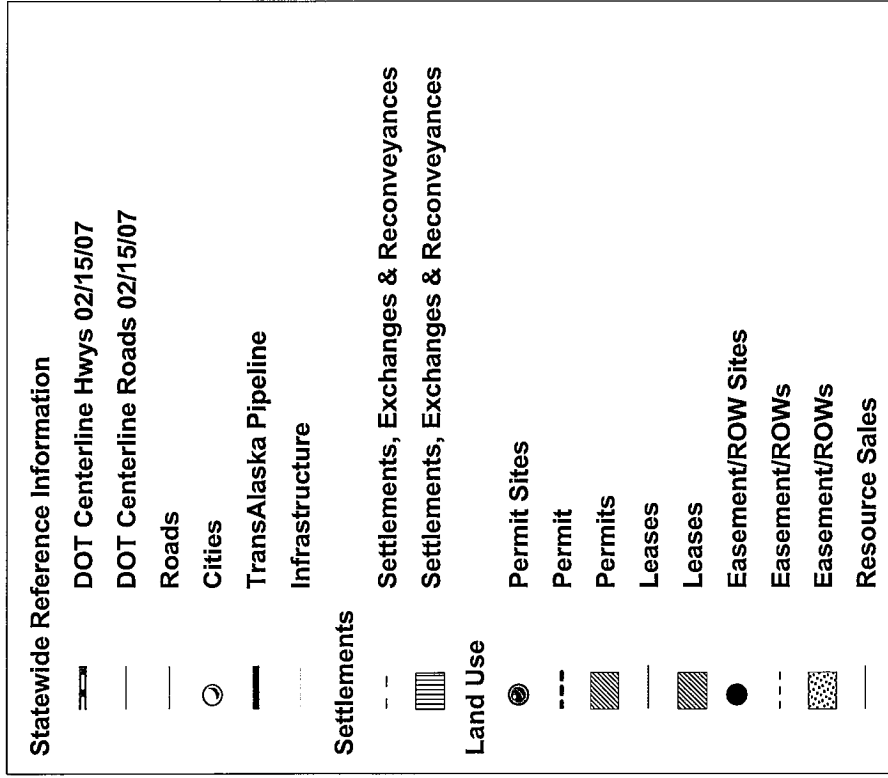
In the Kenai Borough (911) can be used for contacting and mobilation of Community Police, Alaska State Troopers, Fire, or Ambulance.

Drift River Terminal – Potential Spill Incident Federal/State Incident Management Team/Crisis Management Team

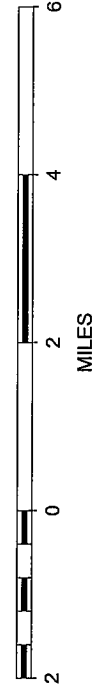


ICS 224 - Environmental Unit Summary			
Incident:	Drift River Terminal Flooding	Prepared By:	Ha, Young at 3/27/2009 15:12
Period:	Period 2 (3/27/2009 16:00 - 3/28/2009 16:00)	Version Name:	3/27/2009 14:15
Area Environmental Data			
<p>Land status map is now available from ADNR. The map status map is attached and is titled Drift River. Following is more detailed description of the map's content (Provided by ADNR):</p> <p>Orange spotted areas - Redoubt Bay Critical Habitat Area Blue areas just across the river - Cook Inlet Pipeline Company (CIPC) land Purple adjacent areas - Leased to CIPC by the state Vertical blue striped area - Leased to CIPC by the Kenai Peninsula Borough Red area - federal public land order issued in 1960 revoking the bombing and gunnery range of the area</p> <p>ADFG provided the summary of Resources at Risk on March 26, 2009. This information is included as ICS 232.</p>			
Priorities for Mitigating Environment and Cultural Impacts			
<p>Following is a list of Geographical Response Strategies within 10 miles of the Drift River Terminal. The link to the GRS is also included.</p> <p>Little Jack Slough GRS - http://www.dec.state.ak.us/spar/perp/grs/ci/cic/cic14littlejackslough.pdf Drift River GRS - http://www.dec.state.ak.us/spar/perp/grs/ci/cic/cic15driftriver.pdf Big River GRS - http://www.dec.state.ak.us/spar/perp/grs/ci/cic/cic16bigriver.pdf Kustatan River GRS - http://www.dec.state.ak.us/spar/perp/grs/ci/cic/cic17kustatanriver.pdf Swamp Creek GRS - http://www.dec.state.ak.us/spar/perp/grs/ci/cic/cic20swampcreek.pdf</p>			
Wildlife Assessments and Rehabilitation			
No impacts to wildlife has been observed to date.			
Permits (Dispersants, Burning, and/or Other			
No permits are required at this time.			
Waste Management			
No Waste Management Plan is required at this time.			
Other Environmental Concerns			
Logistical Support Needs			
<div></div>			
ICS 224 - Environmental Unit Summary		Printed: 3/27/2009 15:51	Page 1 of 1 © 1997-2009 dbSoft, Inc.

Drift River



SCALE 1 : 139,674



ICS 230 - Daily Meeting Schedule			
Incident:	Drift River Terminal Flooding	Prepared By:	Petit, Bob at 3/27/2009 14:12
Period:	Period 2 (3/27/2009 16:00 - 3/28/2009 16:00)	Version Name:	3/27/2009 14:11
Meeting Name & Date/Time	Purpose	Attendees	Location
INITIAL INCIDENT BRIEFING MEETING 3/27/2009 10:30	Report incident situation & resource information to incoming IMT in a concise manner. Brief IMT on: incident specifics, nature & status of response operations, strategic objectives & priorities, recommended initial actions to be taken by incoming IMT.	Prospective IC/UC; Field Command Representative; Command and General Staff, as required.	
ICS 230 - Daily Meeting Schedule			
Printed: 3/27/2009 15:51		Page 1 of 1	
© 1997-2009 dbSoft, Inc.			

ICS 231 - Meeting Summary

Incident: Drift River Terminal Flooding	Prepared By: Petit, Bob at 3/27/2009 14:12
Period: Period 2 (3/27/2009 16:00 - 3/28/2009 16:00)	Version Name: INITIAL INCIDENT BRIEFING MEETING

Meeting Information

Meeting Name:	INITIAL INCIDENT BRIEFING MEETING
Meeting Datetime:	3/27/2009 10:30
Meeting Location:	
Meeting Facilitator:	Current IC/UC or deputy; Planning Section Chief.

Purpose and Attendees

Purpose:	Report incident situation & resource information to incoming IMT in a concise manner. Brief IMT on: incident specifics, nature & status of response operations, strategic objectives & priorities, recommended initial actions to be taken by incoming IMT.
Attendees:	Prospective IC/UC; Field Command Representative; Command and General Staff, as required.

Agenda Outline

1. Establish a permanent record of the initial response to an incident.
2. Status of people.
3. Current organization.
4. Nature and status of source.
5. Type, location, and status of discharged material.
6. Safety considerations.
7. Nature and status of field response operations/tactics employed.
8. Incident potential.
9. Requests for assistance from field responders.
10. Resource status (resource assignments, enroute/order status).
11. Facilities established (Field Command Post, Staging Areas).
12. Strategic objectives.
13. Response priorities.

RESOURCES AT RISK SUMMARY

Substitute ICS 232-OS form

1. Incident Name: Drift River Facility Flooding
2. Operational Period: from March 27, 2009, 1:00 pm, until revised
3. Environmentally-Sensitive Areas and Wildlife Issues

Site No.	Priority	Site Name / Physical Location	Site Issues
1	HIGH	Redoubt Bay Critical Habitat Area, located north of the Drift River Facility (see attached map)	<ul style="list-style-type: none"> • Waterfowl concentrations in spring and fall, throughout the critical habitat area, and south to Harriet Point, inclusive of the Drift River Facility. • Waterfowl molting concentrations, throughout the critical habitat area, and south to Katchin Creek, inclusive of the Drift River Facility. • Anadromous fish in streams and lakes, including in Drift River • Shorebird concentrations in spring and fall, throughout the critical habitat area, and south, inclusive of the Drift River Facility. • Harbor seal haulout concentrations, at least 1 site within the critical habitat area. • Brown bear concentrations in summer and fall, throughout the critical habitat area, and south, inclusive of the Drift River Facility. • Black bear concentrations in spring, throughout the critical habitat area, and south, inclusive of the Drift River Facility. • Beluga whale feeding in nearshore waters.
2	HIGH	Kalgin Island and Kalgin Island Critical Habitat Area, located southeast of the Drift River Facility in Cook Inlet	<ul style="list-style-type: none"> • Harbor seal haulout concentrations, at least two sites • Streams and lakes with anadromous fish • Waterfowl concentrations in spring and fall

3	HIGH	Trading Bay State Game Refuge, located north of Redoubt Bay Critical Habitat Area	<ul style="list-style-type: none"> • Waterfowl concentrations in spring, along the coast and up to three miles inland • Waterfowl concentrations in fall, throughout the refuge. • Waterfowl concentrations during molting, throughout the refuge. • Bear concentrations in spring, throughout the refuge • Streams and lakes with anadromous fish • Shorebird concentrations in spring and fall, throughout the refuge. • Beluga whales feeding in nearshore waters. • Seabird concentrations, McArthur Flats.
4	HIGH	Clam Gulch Critical Habitat Area, located across Cook Inlet from the Drift River Facility to the east	<ul style="list-style-type: none"> • Waterfowl concentrations in spring, in area between Clam Gulch and Kasilof. • Waterfowl concentrations in fall, in area north and west of Kasilof. • Waterfowl concentrations in winter, near Cape Starichkof • Streams and lakes with anadromous fish • Razor clam concentrations, along coast from Cape Kasilof south to Cape Starichkof. • Seabird concentrations near mouth of Kasilof River.
5	HIGH	Mouth of the Kenai River, located across Cook Inlet from the Drift River Facility to the east	<ul style="list-style-type: none"> • Waterfowl concentrations in spring and summer • Beluga whale concentrations in spring, summer and fall, at the mouth of the Kenai River and in the marine environment outside of the mouth. • Anadromous fish streams. • Shorebird concentrations in spring at the mouth of the Kenai River. • Seabird colonies are found at the mouth of the Kenai River.

Narrative

Other most environmentally sensitive areas in Cook Inlet, further from the Drift River Facility, but still situated in the path of a potential oil spill include:

- Barren Islands
- Chinik Head to Silver Beach (Kamishak Bay)
- Susitna Flats and Susitna Flats State Game Refuge
- Anchorage Flats and Anchorage Coastal Wildlife Refuge
- Goose Bay State Game Refuge
- Palmer Hay Flats State Game Refuge
- Kachemak Bay Critical Habitat Area and Fox River Critical Habitat Area

A map showing environmentally sensitive areas for spring (April – May) can be found at: <http://www.asgdc.state.ak.us/maps/cplans/cook/PDFS/SPRING.PDF>

Individual maps of most environmentally sensitive areas for Cook Inlet can be accessed at:

<http://www.asgdc.state.ak.us/maps/cplans/subareas.html#cook>

4. Archaeo-cultural and Socio-economic issues: Archaeo-cultural issues are being reported upon by ADNIR. The following subsistence and personal use harvest information has been supplied by ADF&G – Subsistence Division.

Site No.	Priority	Site Name / Physical Location	Site Issues
1	HIGH	Cook Inlet	<ul style="list-style-type: none">• Non-commercial, personal use net fisheries for salmon.• Subsistence set gill net salmon fisheries in Tyonek Subdistrict, around Seldovia, and in the Port Graham and Koyuktoluk subdistricts.• Significant marine subsistence fisheries (halibut, rockfish, cod) around Seldovia, and in the Port Graham and Koyuktoluk subdistricts.• Marine mammal hunting for harbor seals, sea lions, and sea otters takes place in lower Cook Inlet.• Subsistence bird hunting, lower Cook Inlet.• Very significant subsistence harvests of marine invertebrates in areas outside the nonsubsistence areas of lower Cook Inlet.• Significant personal use fisheries for clams.