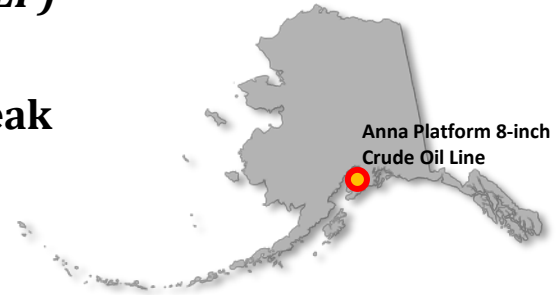




ALASKA DEPARTMENT OF ENVIRONMENTAL CONSERVATION
Division of Spill Prevention and Response
Prevention Preparedness and Response Program
SITUATION REPORT (SITREP)

Hilcorp Anna Platform Crude Oil Line Leak



SITREP #: 1

SPILL #: 17239909101

TIME/DATE OF DISTRIBUTION: 9:00 p.m. April 1, 2017

POTENTIAL RESPONSIBLE PARTY (PRP): Hilcorp Alaska, LLC (Hilcorp)

INCIDENT LOCATION: Anna Platform and 8-inch crude oil pipeline located in the Upper Cook Inlet near Granite Point. (Lat/Long: 60.9763667, -151.315766)

TIME/DATE OF SPILL: Exact time of release is unknown; however, the spill was discovered at 11:20 am on April 1, 2017.

HOW/WHEN SPILL WAS DISCOVERED AND REPORTED: Anna Platform personnel felt an impact to the platform. The sheen was discovered at 11:20 a.m. and Hilcorp reported the incident to the Alaska Department of Environmental Conservation (ADEC) at 12:05 p.m. on the same day.

TYPE/AMOUNT OF PRODUCT SPILLED: Cook Inlet crude oil. The oil capacity in the 8-inch line is 461 barrels. The amount that has been released to the environment is unknown, but the line is at full capacity.

CAUSE OF SPILL: The cause of the leak is unknown at this time and is being investigated.

SOURCE CONTROL: The Anna and Bruce platforms have been shut in and the pressure to the line has been reduced from 70 pounds per square inch (psi) to 5 psi. The 8-inch pipeline is an underwater pipeline at approximately 75-feet below Cook Inlet water surface.

RESPONSE ACTION: In looking over the side of the platform to see what was going on, personnel observed sheen and bubbles coming up from near one of the platform legs where the 8-inch line is located. Personnel confirm that the bubbles or sheen were not observed the day prior. Hilcorp conducted overflights at 12:30 p.m. and again at 1:30 p.m. today. During the 12:30 p.m. overflight, Hilcorp personnel observed six sheens with the furthest sheen being 3.5 miles south of the Anna Platform. The largest sheen was 10 feet by 12 feet and two of the sheens were three to four feet by 20 to 25 feet in size. During the 1:30 p.m. overflight no sheen was observed. Upon discovering the sheen, Hilcorp activated their response contractor, shut in the Anna and Bruce platforms, and reduced the line pressure from 70 psi to 5 psi. The oil spill response vessel Perseverance arrived at the Anna Platform around 12:45 p.m. and scouted the area for sheens with no success. Hilcorp has hired a diving contractor to investigate the line and conduct repairs. It is anticipated that this work can be conducted late next week. A Unified Command has been established and is composed of Hilcorp, the U.S. Coast Guard

(USCG), and ADEC. The Incident Command Post is being established at Cook Inlet Spill Response Inc. (CISPRI) in Nikiski.

RESOURCES AT RISK OR AFFECTED:

Shorelines - Shoreline type varies throughout upper Cook Inlet. Shorelines around the East Forelands area include mixed sand and gravel beaches, coarse-grained sand, and exposed tidal flats. Redoubt Bay and Trading Bay on the west side of Cook Inlet include salt and brackish-water marshes and sheltered tidal flats which are of high importance to bird and invertebrate species.

Marine Mammals - Species likely to be present in upper Cook Inlet include Cook Inlet beluga whale (Endangered Species Act [ESA]-listed as endangered), western Distinct Population Segment (DPS) Steller sea lion (ESA-listed as endangered), Mexico DPS humpback whale (ESA-listed as threatened), harbor seals, killer whales, Hawaii DPS humpback whales, harbor porpoise, and Dall's porpoise. The Southwest Alaska DPS Northern sea otter (ESA-listed as threatened) is known to occur in lower Cook Inlet. The discharge location is within designated Critical Habitat for Cook Inlet beluga whales. Cook Inlet beluga whales are likely utilizing offshore waters in upper Cook Inlet during winter and will concentrate near forage fish locations as those populations arrive.

Fish - There are no active commercial or subsistence fisheries currently taking place in northern Cook Inlet. About 5 miles west of the Anna Platform is the Trading Bay State Game Refuge. The north shore of northern Cook Inlet is mainly tidally influenced mud flats. Old Tyonek Creek (Stream No. 247-20-10050) enters Cook Inlet about 4 miles north of the Anna Platform in Beshta Bay and is known to support coho, Chinook, and pink salmon, and eulachon. Tyonek Creek (Stream No. 247-20-10040), unnamed creek (Stream No. 247-20-10030), and Indian Creek (Stream No. 247-20-10020) enter Cook Inlet near the Village of Tyonek about 7 miles northeast of Anna Platform and are known to support coho and pink salmon. Nikolai Creek (Stream No. 247-10-10200) enters Cook Inlet about seven miles northwest of Anna Platform and is known to support coho, Chinook, and pink salmon, and Dolly Varden.

Birds - Waterfowl and shorebirds are overwintering in upper Cook Inlet. Notably, rock sandpipers are known to overwinter in upper Cook Inlet feeding on bivalves, including almost the entire population of the subspecies *Calidris ptilocnemis ptilocnemis*. Bald and golden eagles are also present in Cook Inlet year round. Migratory birds, including waterfowl, seabirds, and shorebirds will likely begin arriving in high numbers in the Cook Inlet area in late March to early April.

Future Plans and Recommendations: Hilcorp believes that the leak source may be from a flange located within the first 50 feet of the 8-inch line coming off from the Anna Platform. On April 2, Hilcorp will send a foam pig through the line past the flange point to isolate any leak location and will reassess if driving the pig further down the pipe is warranted. A representative from ADEC Spill Prevention and Response (SPAR) and USCG will be on the Anna Platform tomorrow morning to monitor the pigging activity. Hilcorp will draft a response action plan and submit to ADEC.

ADDITIONAL INFORMATION: It should be noted that the crude oil line leak involving the Anna Platform is unrelated and unconnected to the Hilcorp natural gas leak in Cook Inlet between Platform A and Nikiski.

WEATHER: Today: Rain and snow; lows overnight in the upper 20°F. Tonight: Periods of rain and snow; low 29°F; winds northeast at 10 to 20 mph; chance of precipitation 70 percent. Tomorrow: Snow will taper off and end during the morning but skies will remain cloudy during the afternoon; high 34°F; winds south southwest at 10 to 15 mph; chance of snow 70 percent; snow accumulates less than one inch.

COMMAND AND PERSONNEL:

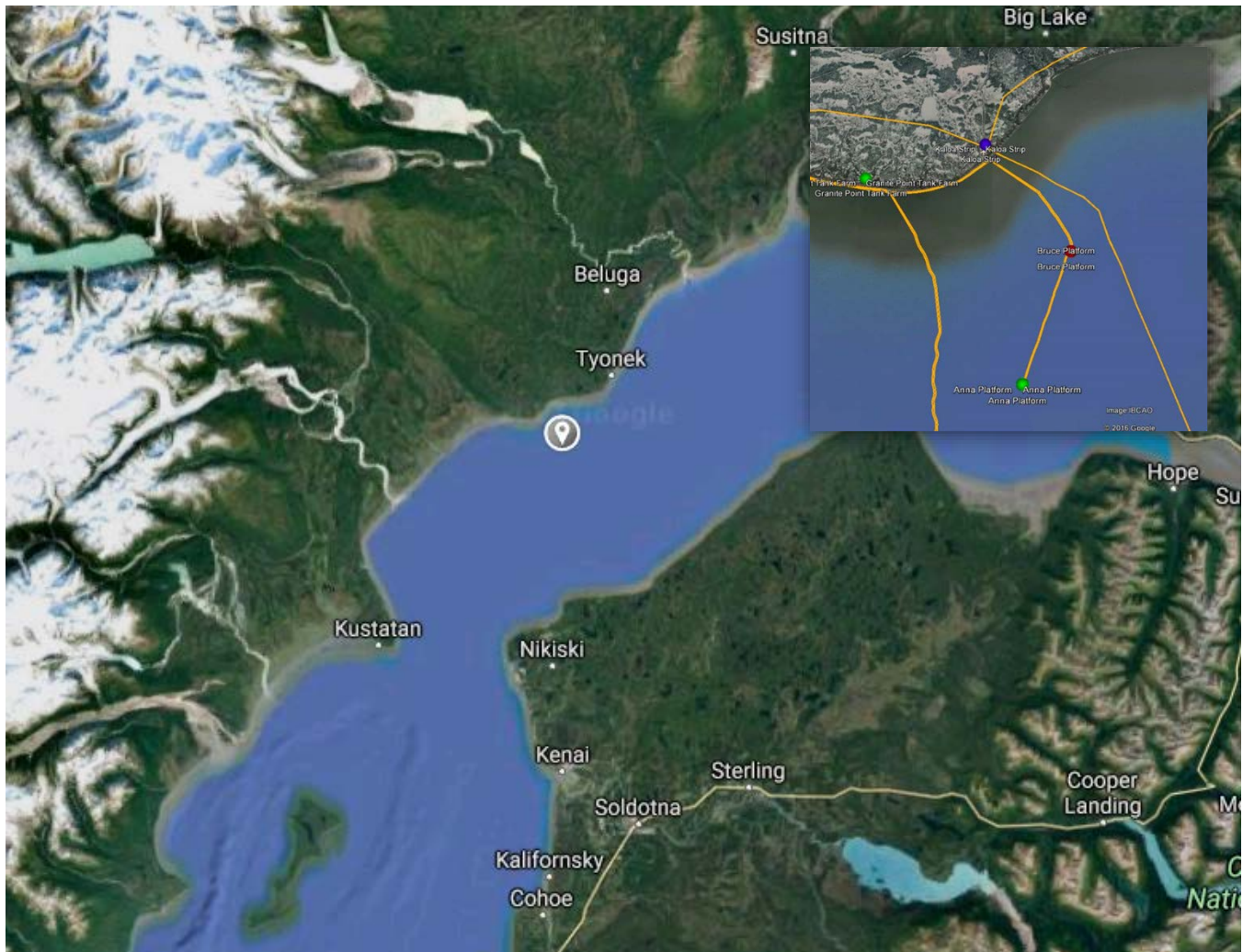
IC: Stan Golis, Hilcorp
 FOSC: Captain Paul Albertson, USCG
 SOS-C-R: Young Ha, ADEC

TIME/DATE OF THE NEXT REPORT DISTRIBUTION: As the situation warrants.

FOR ADDITIONAL INFORMATION CONTACT: Kristin Ryan, SPAR Director, ADEC (907) 632-2557

AGENCY/STAKEHOLDER NOTIFICATION LIST: This situation report was distributed to the agencies listed on the standard distribution list, which includes the governor's office, State Emergency Operations Center, U.S. Department of the Interior, National Marine Fisheries Service, U.S. Fish and Wildlife Service, and other state agencies. This situation report was also distributed to the following agencies and stakeholders:

AGENCY / STAKEHOLDER	NAME	SENT VIA
Hilcorp	Lori Nelson	lnelson@hilcorp.com
AOGCC	Hollis French	Hollis.french@alaska.gov
Senate O - Kenai	Peter Micciche	Senator.Peter.Micciche@akleg.gov
House 29 - Nikiski	Mike Chenault	Representative.mike.chenault@akleg.gov
USCG MSD Homer	USCG-Office	d17-sg-a-msdhomer-all@uscg.mil
US EPA	Bob Whittier	Whittier.robert@epa.gov
CIRCAC	Mike Munger Vinnie Catalano	mikemunger@circac.org stevecatalano@circac.org
Cook Inletkeeper	Bob Shavelson	bob@inletkeeper.org
City of Kenai	Paul Ostrander, City Manager	postrander@kenai.city
Kenai Peninsula Borough	Scott Walden, Office of Emergency Management	swalden@kpb.us
Kenaitze Tribe		btrefon@kenaitze.org
Ninilchik Traditional Council		ntc@ninilchiktribe-nsn.gov



Incident location map.